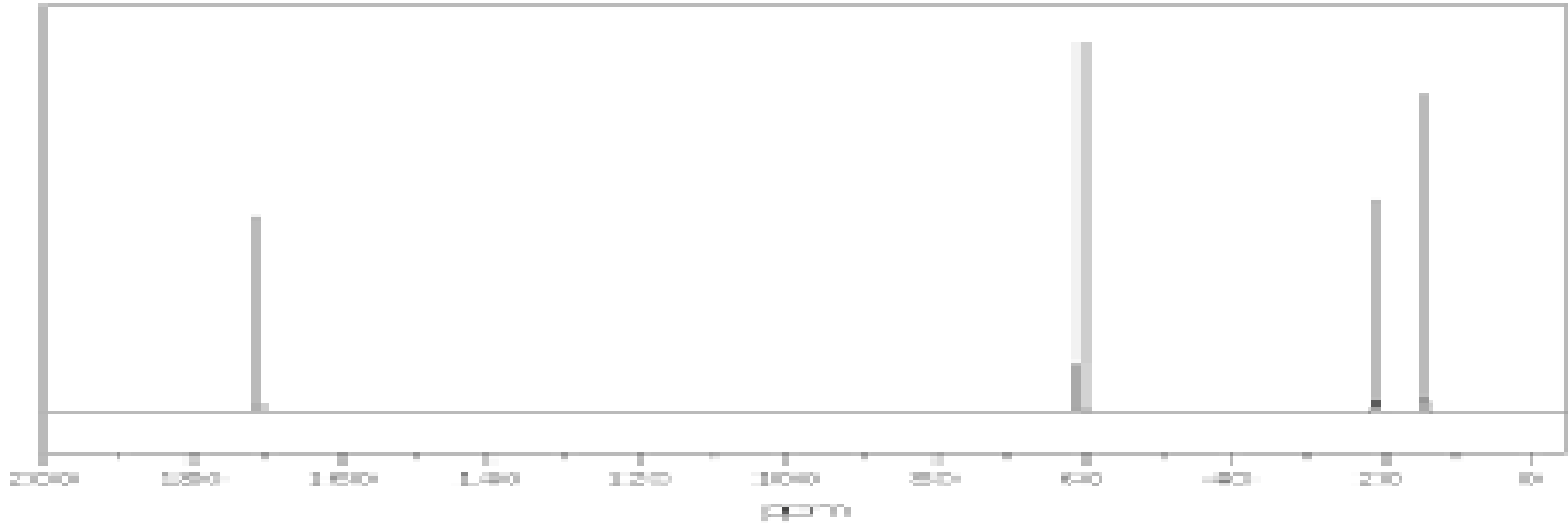
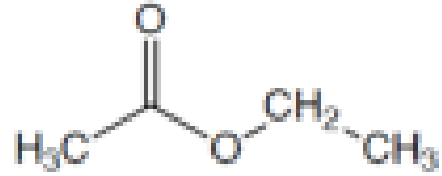
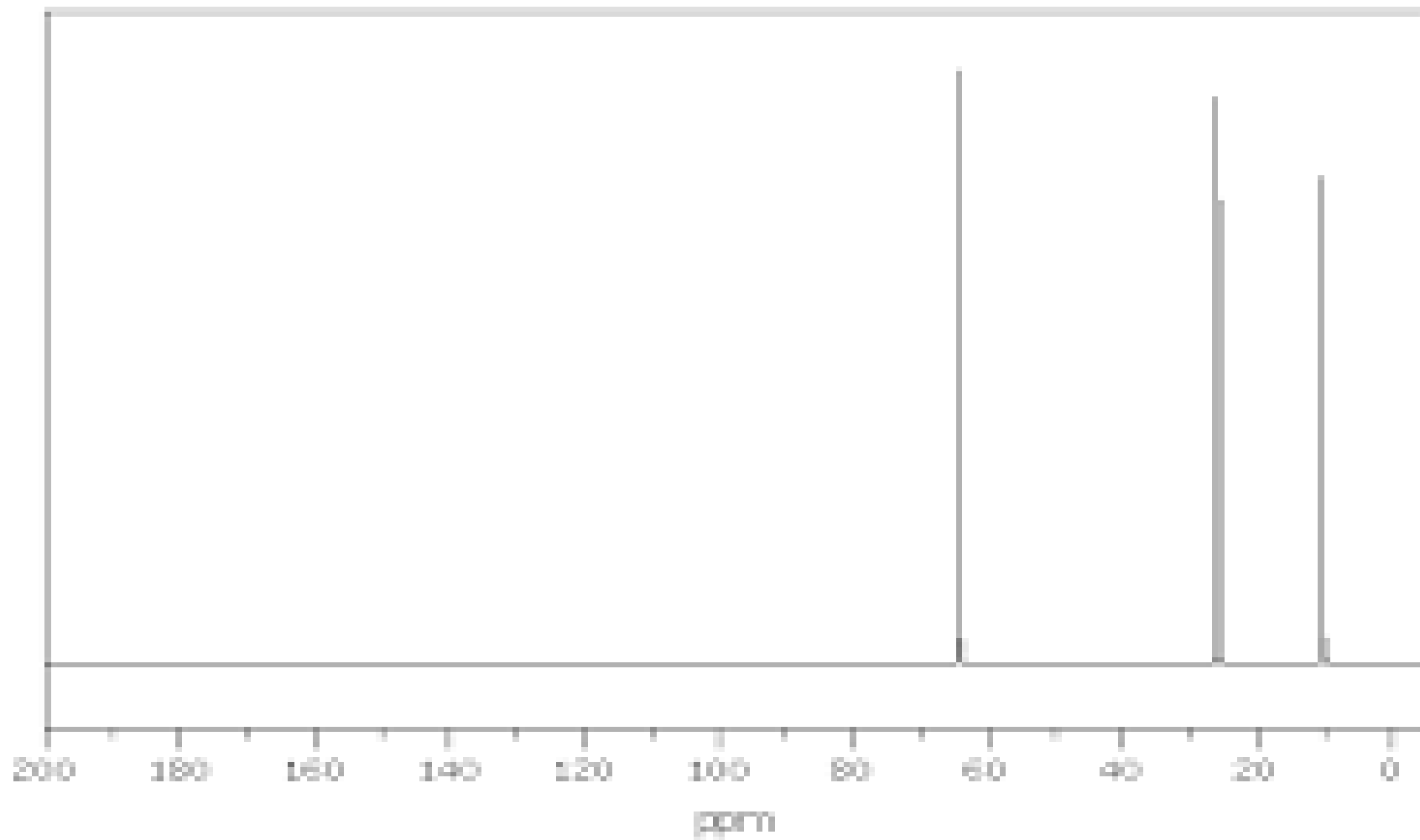
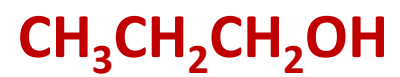


ΑΣΚΗΣΕΙΣ: Να εξηγηθούν οι κορυφές ^{13}C -NMR που φαίνονται στις παρακάτω ενώσεις:

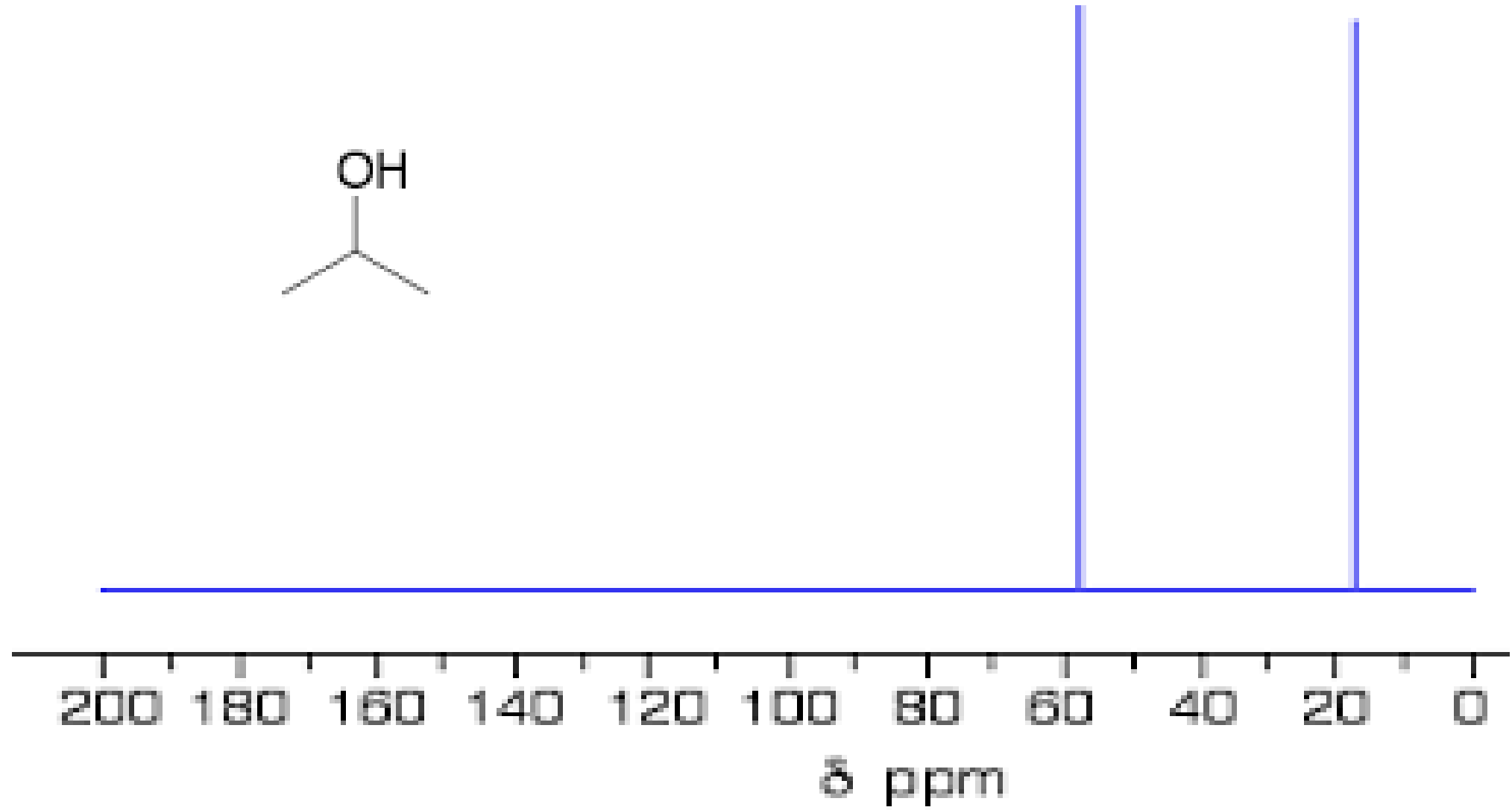
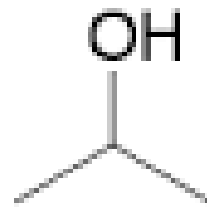
1. Οξικός αιθυλεστέρας



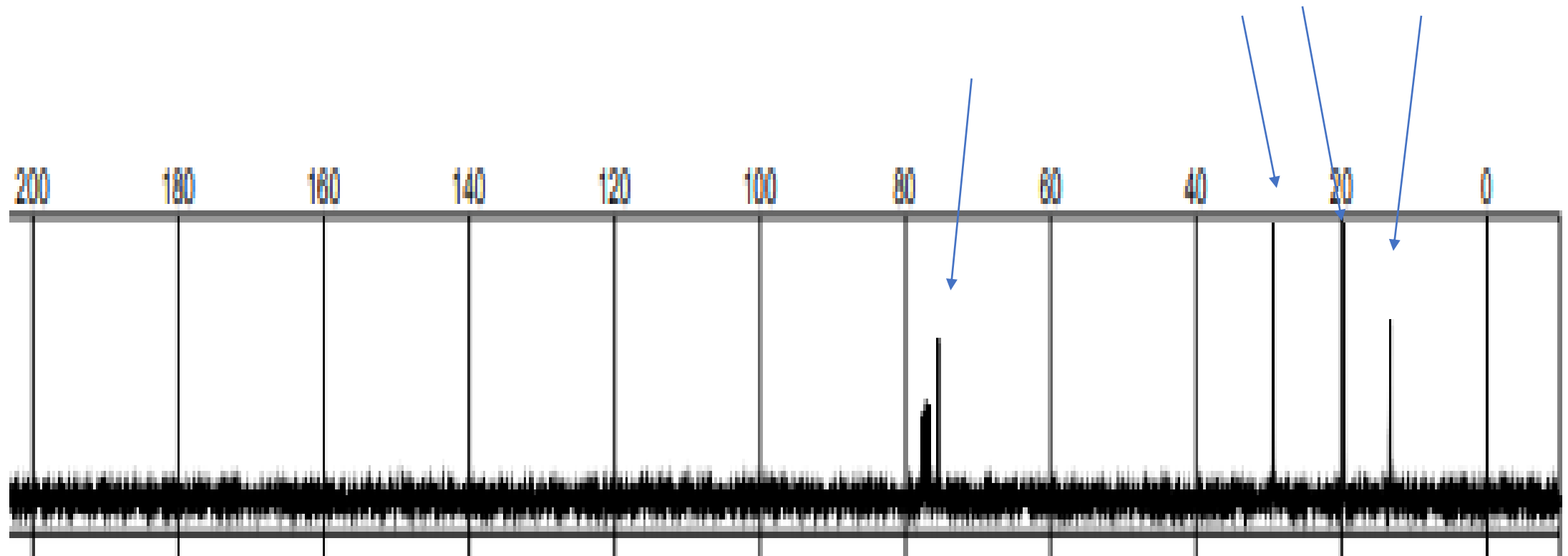
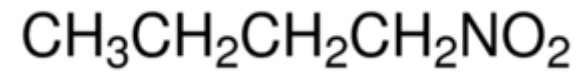
2. Προπανόλη-1



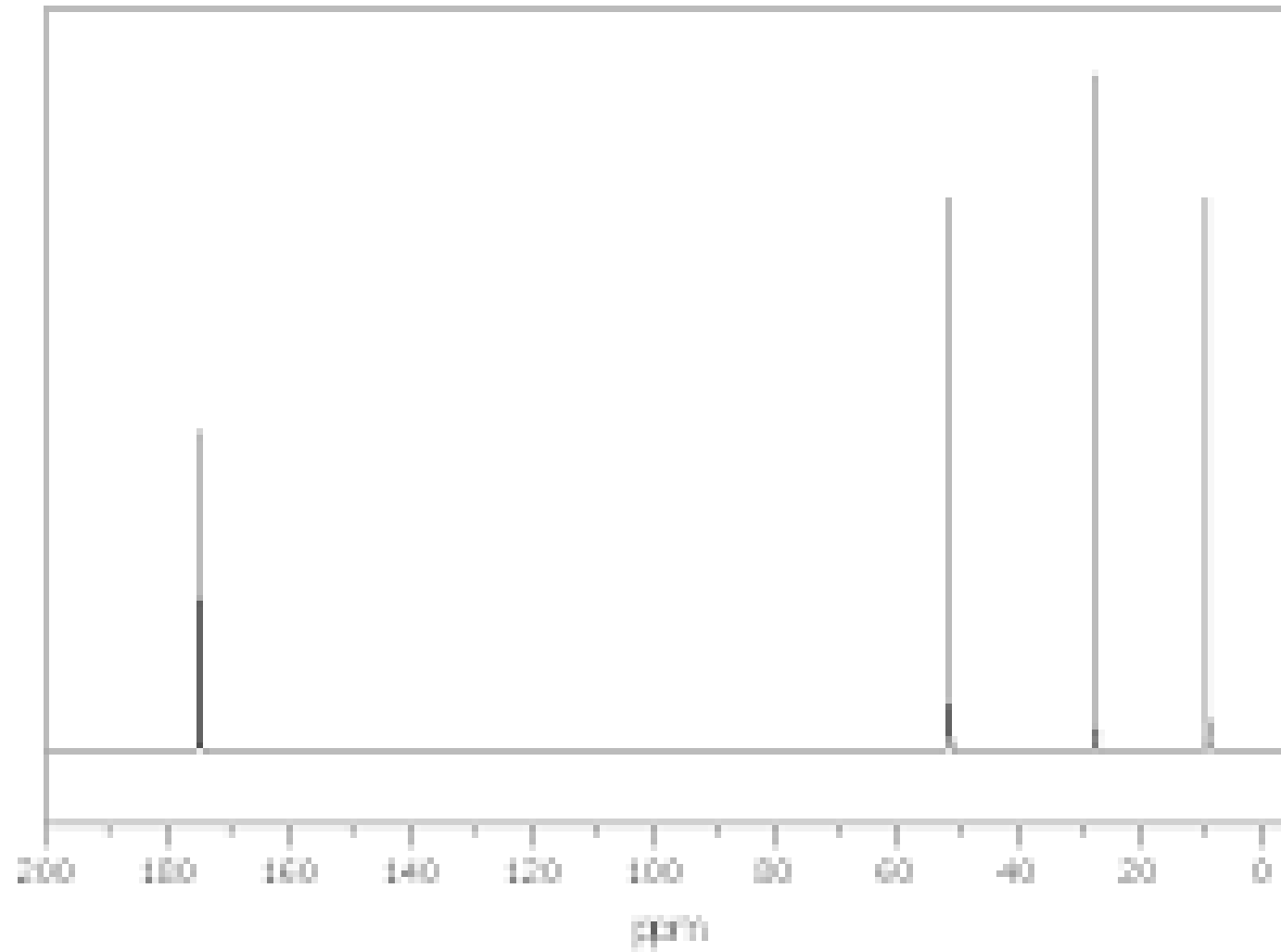
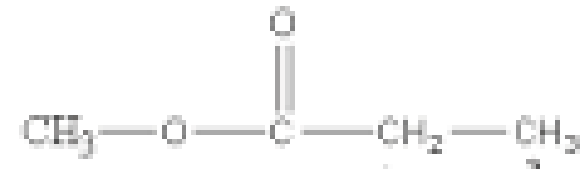
3. Προπανόλη-2



4. 1-Νιτροβουτάνιο

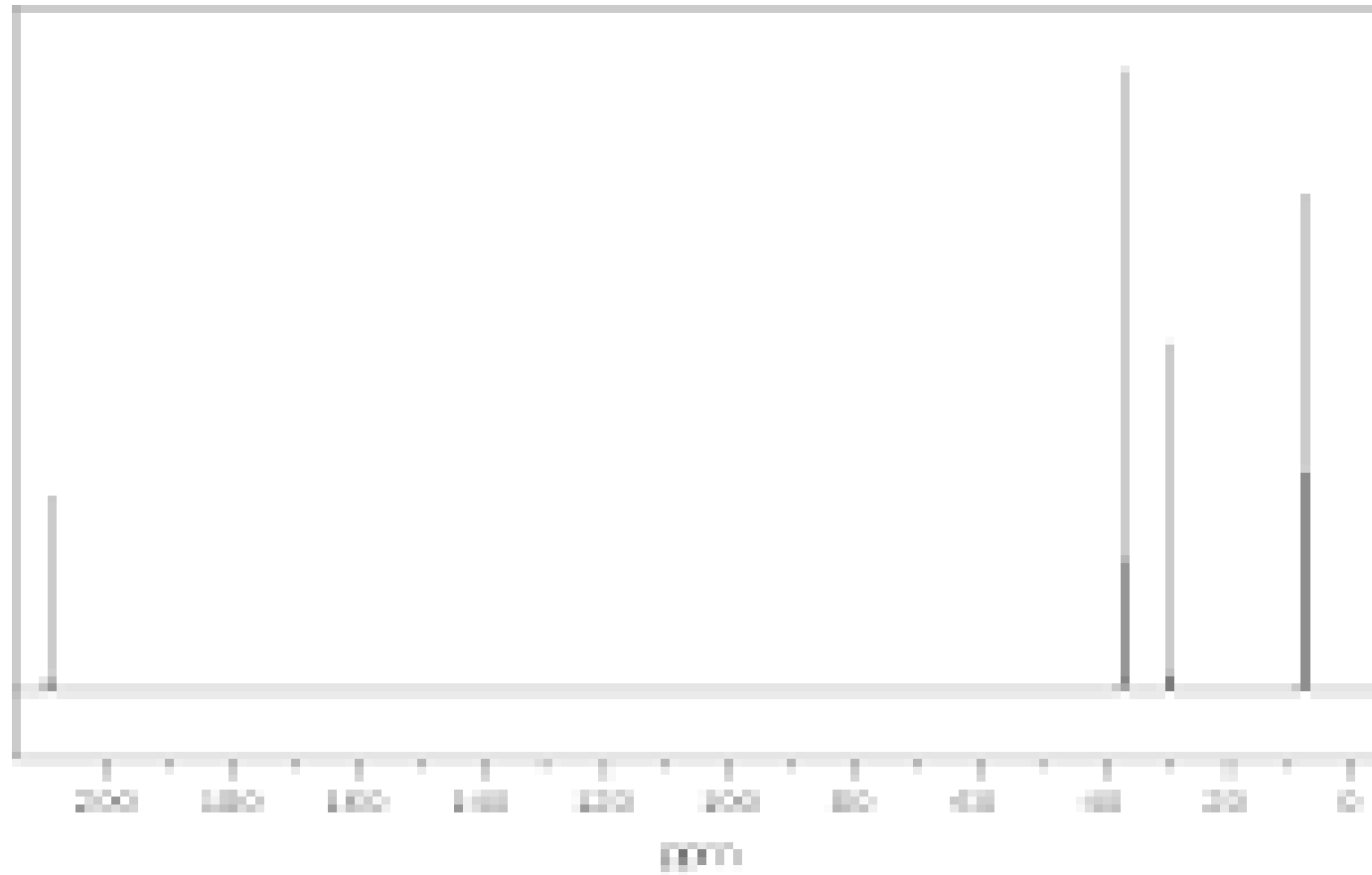
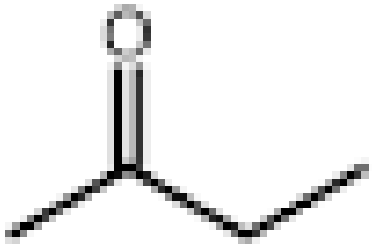


5. Προπανοικός Μεθυλεστέρας

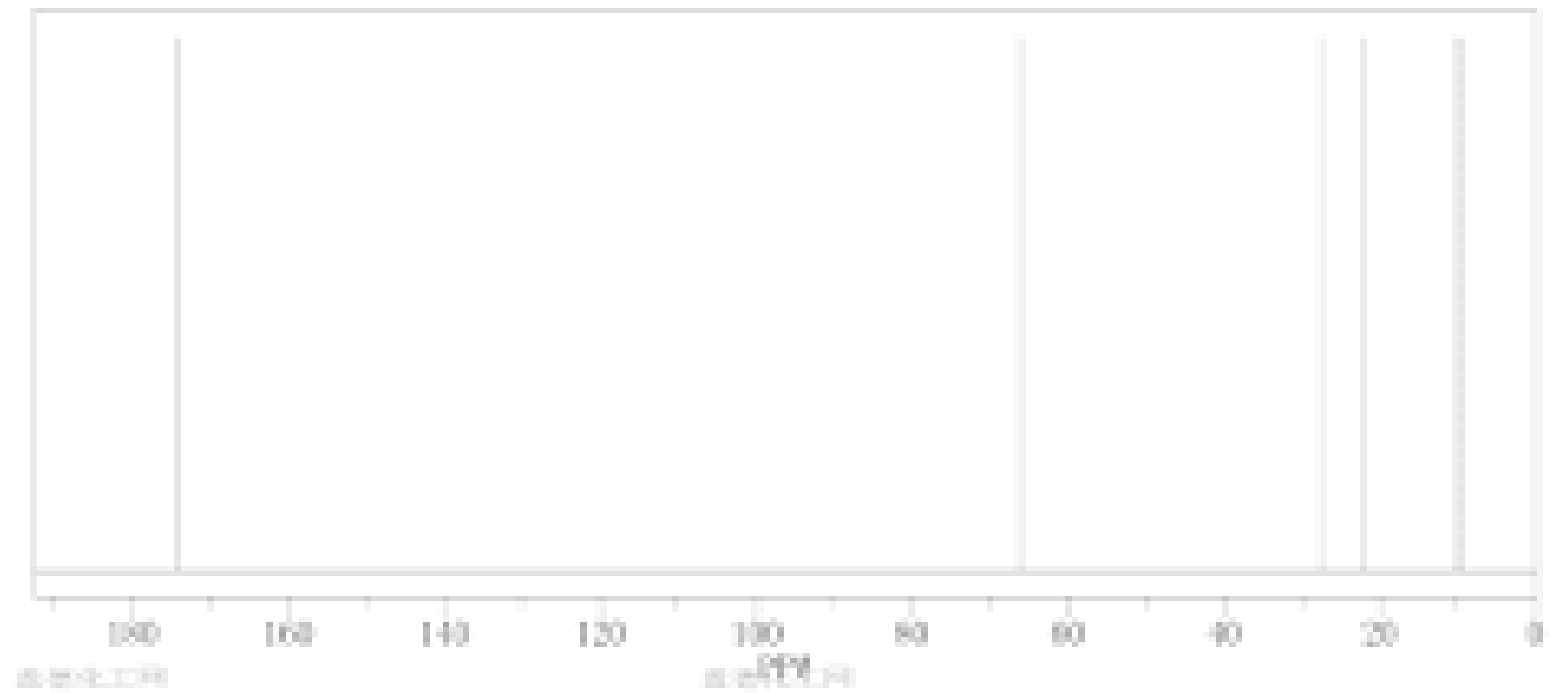
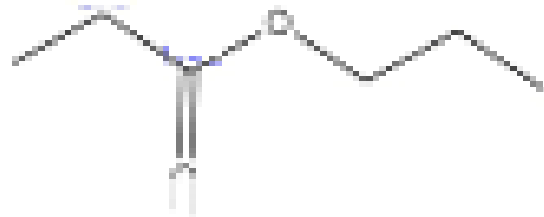


6. 2-Βουτανόνη

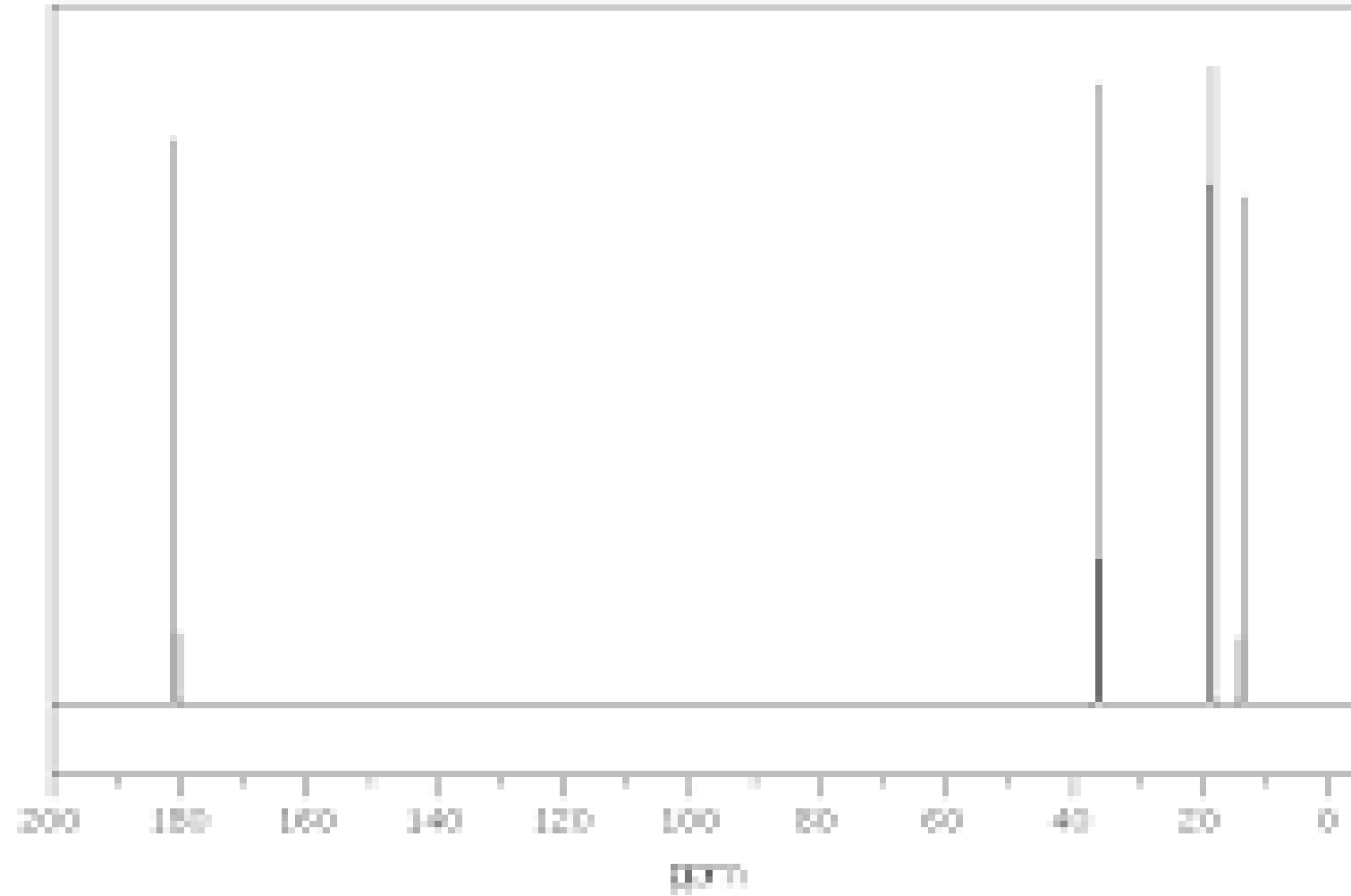
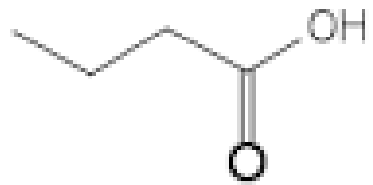
2-butanone



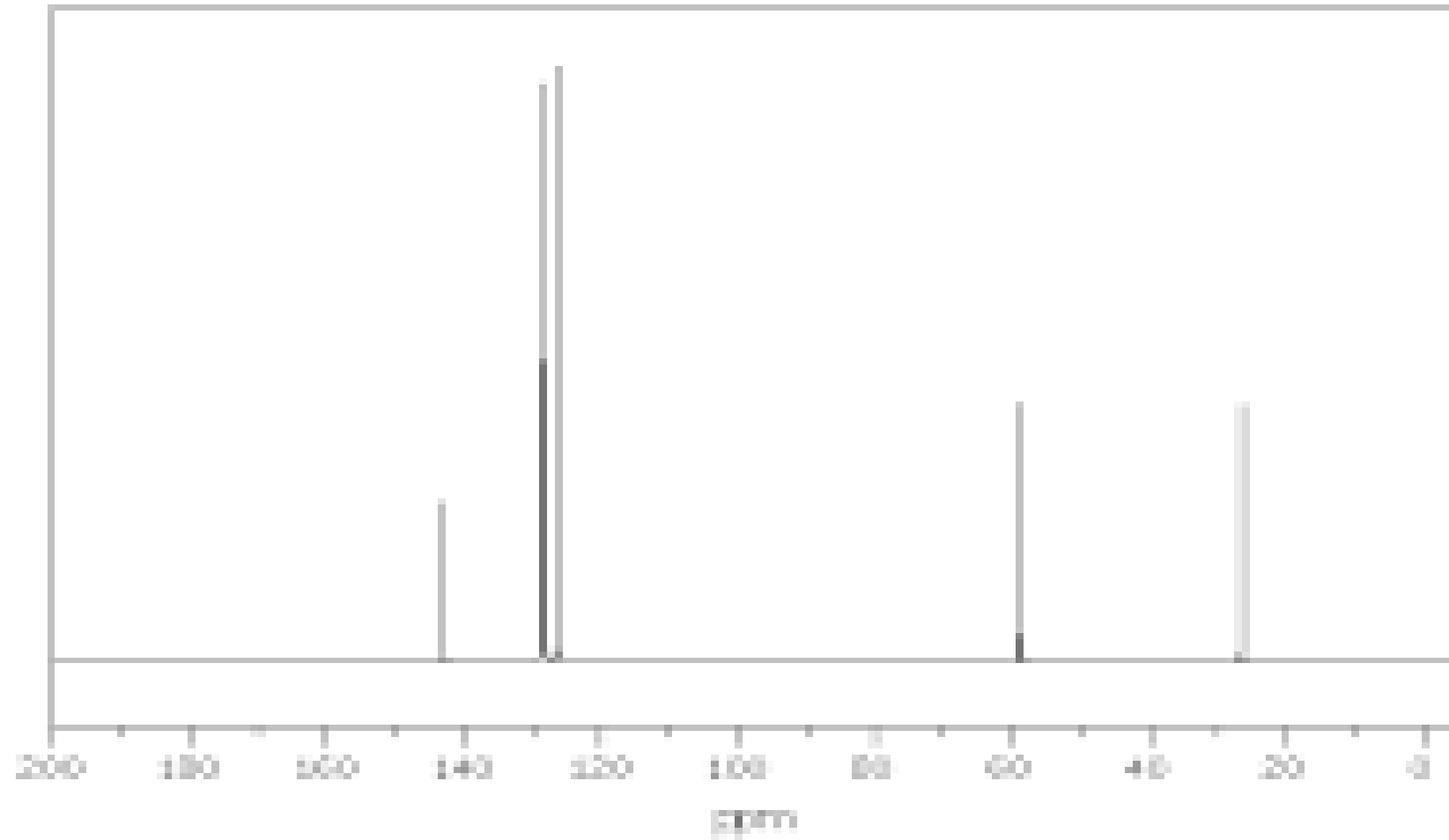
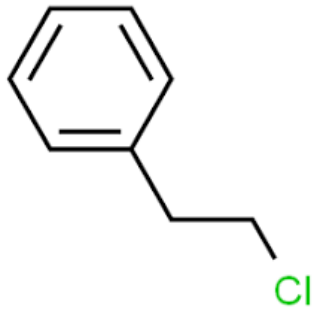
7. Προπανοικός Προπυλεστέρας



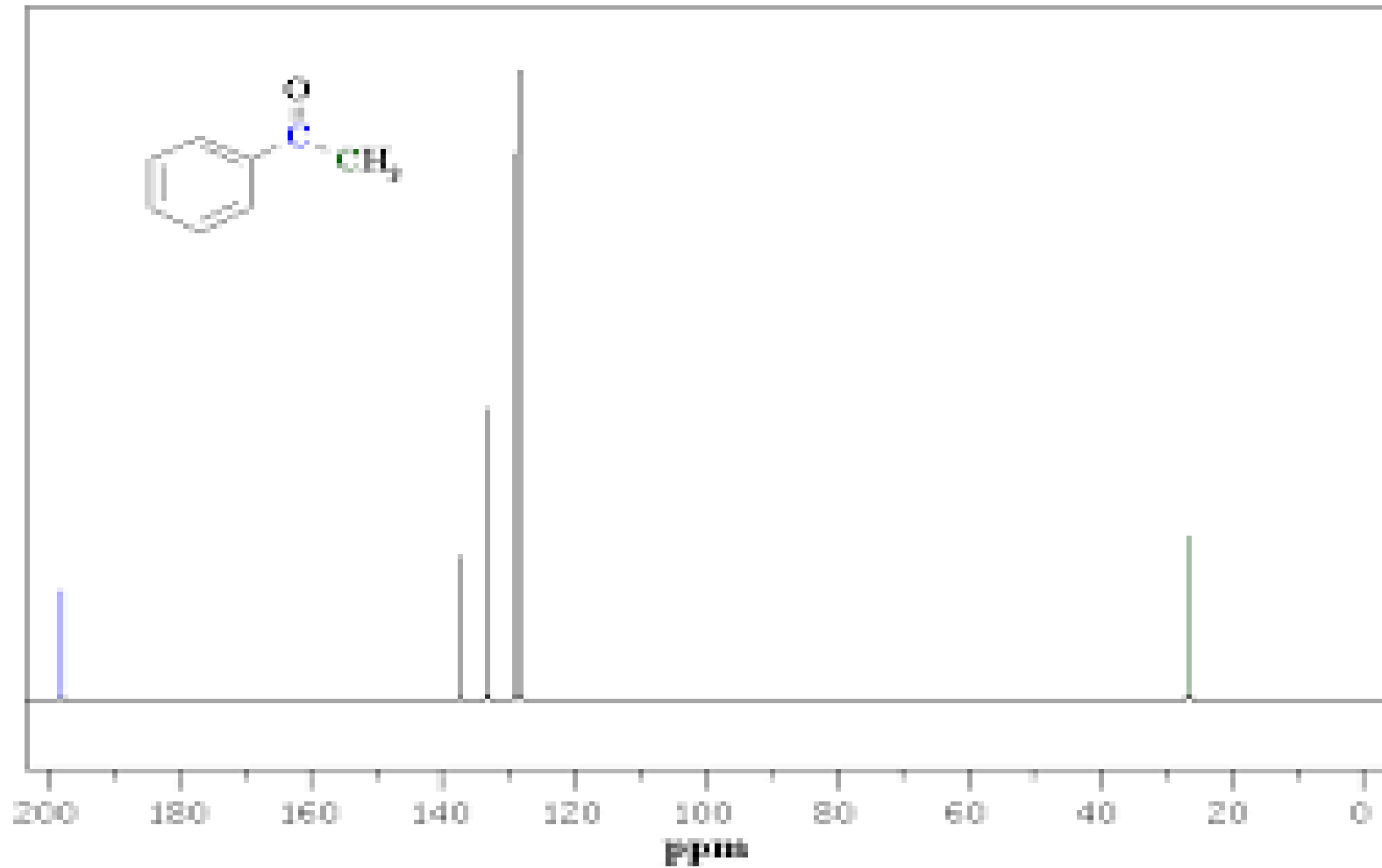
8. Βουτανικό οξύ



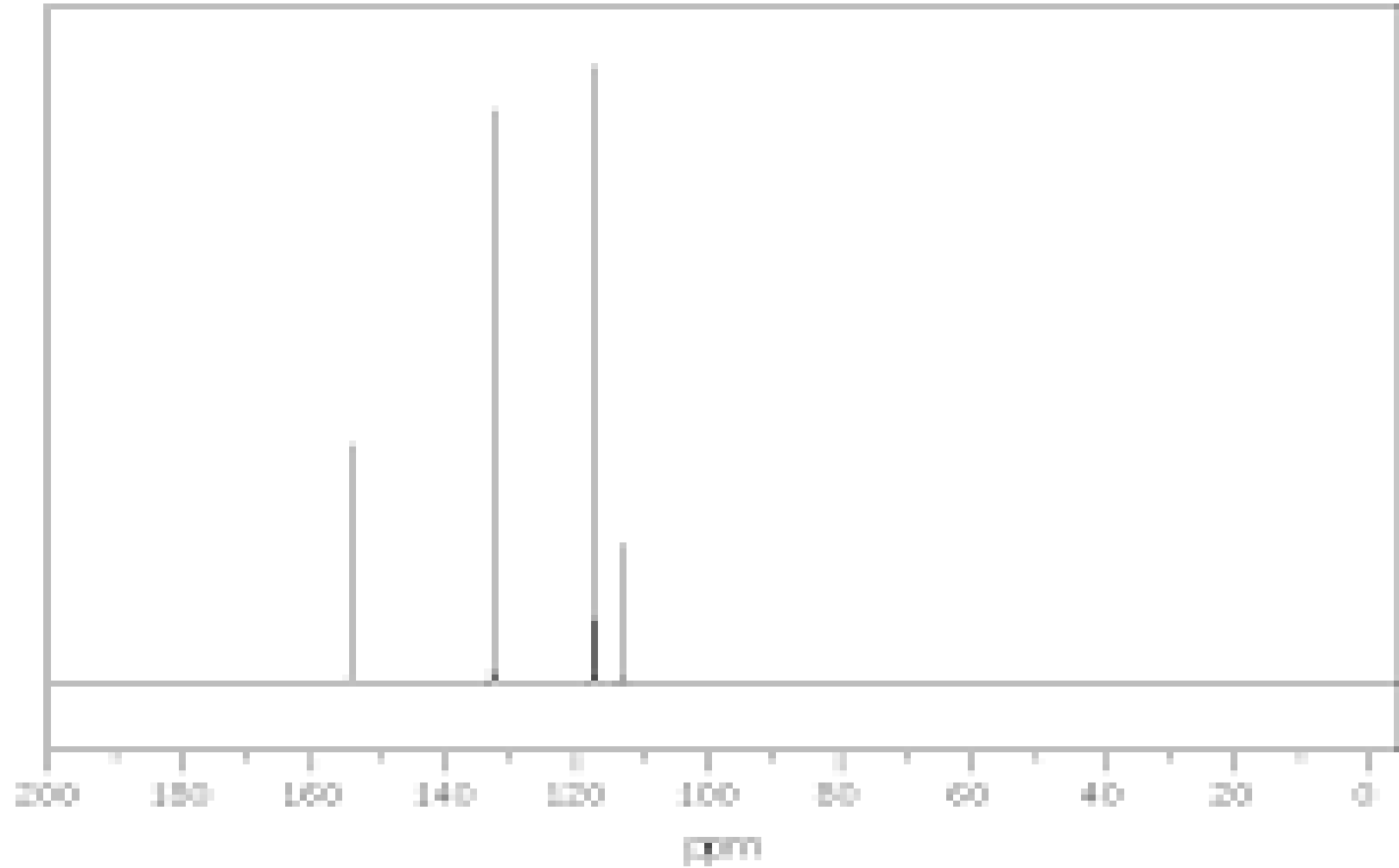
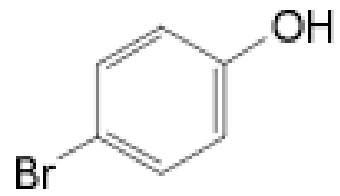
9. ΧΛΩΡΟΑΙΘΥΛΟΒΕΝΖΟΛΙΟ



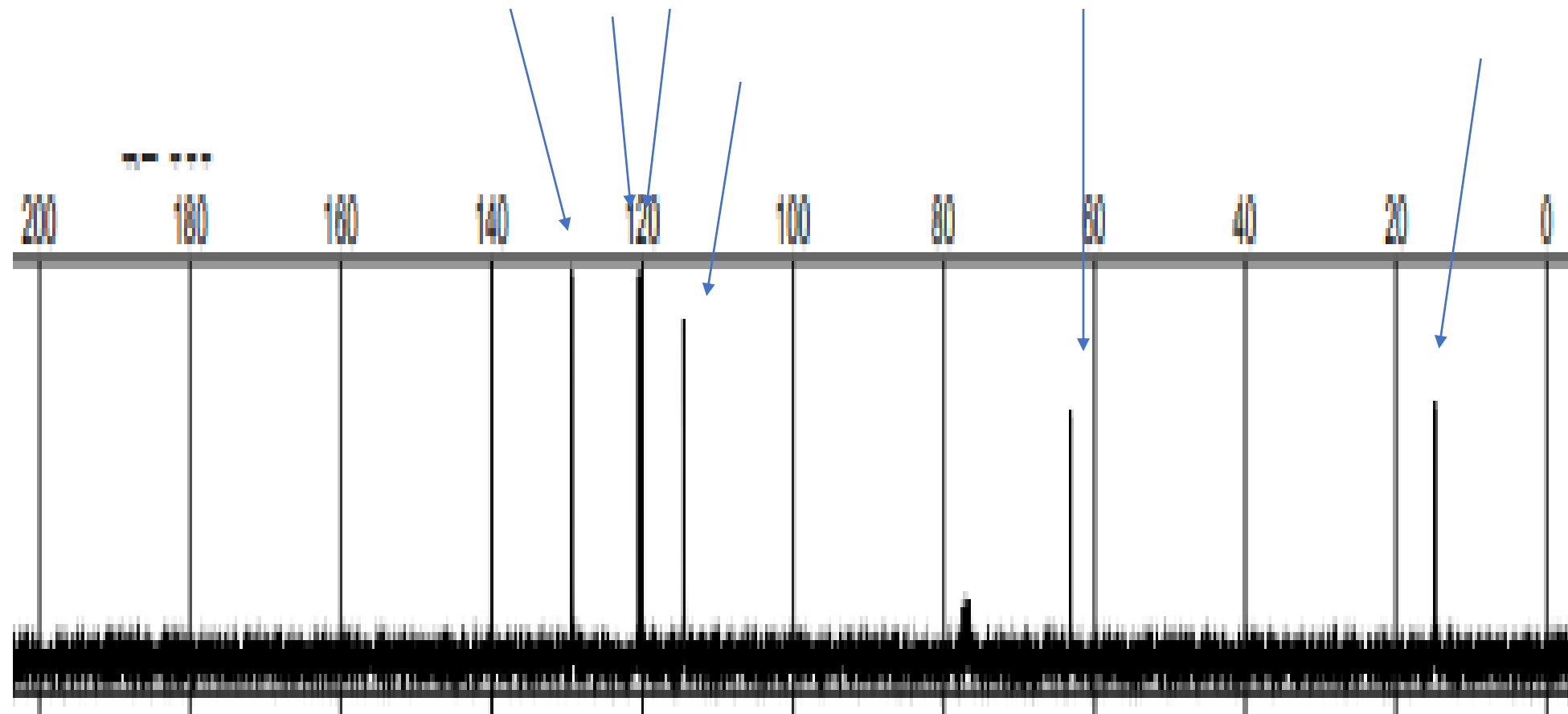
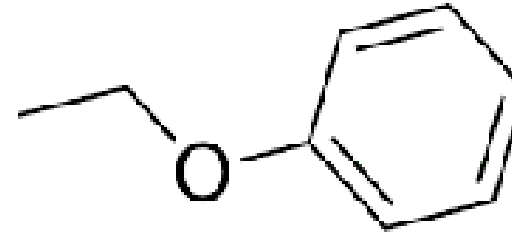
10. Ακετοφαινόνη (Ακετυλοβενζόλιο)



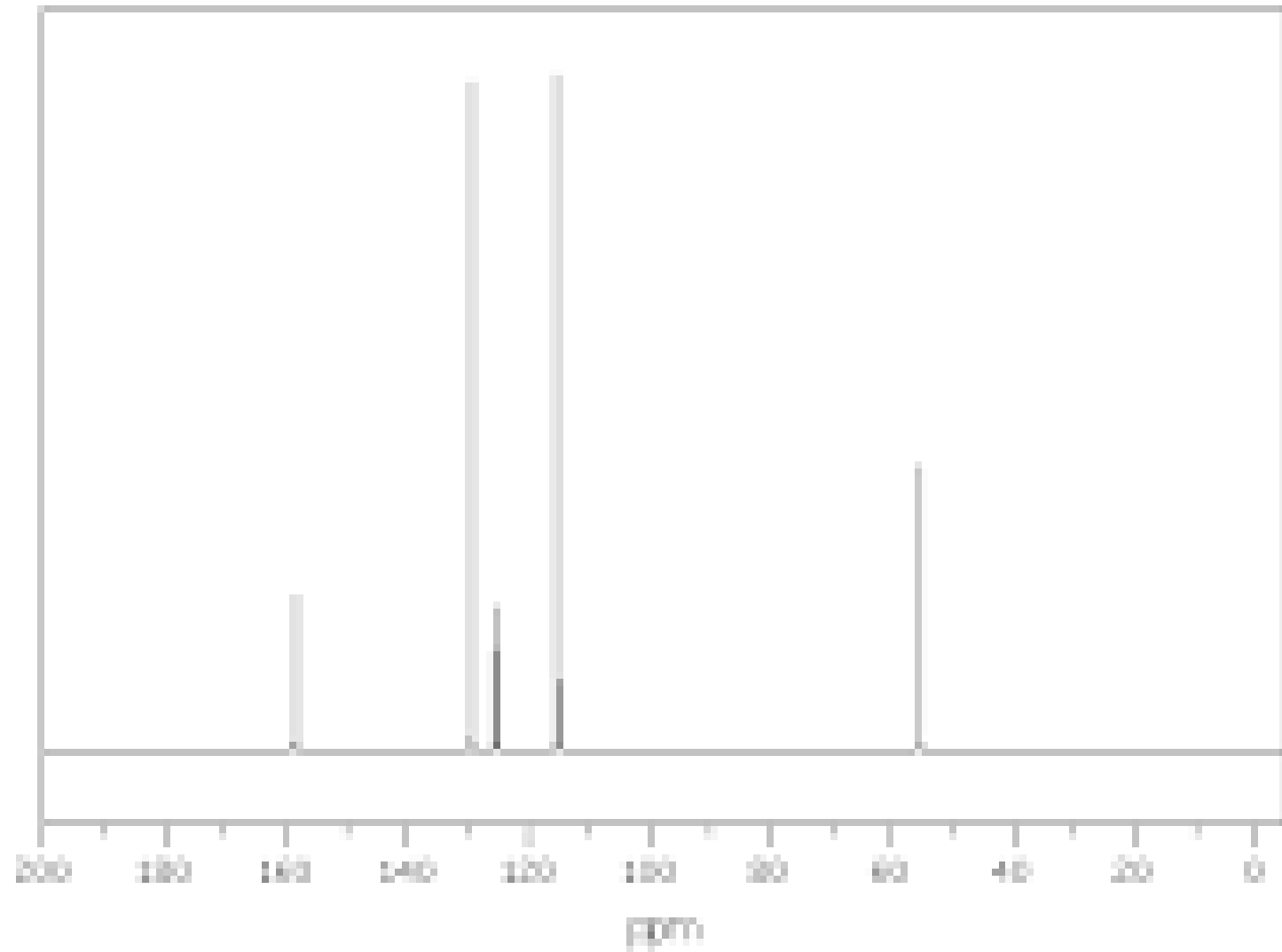
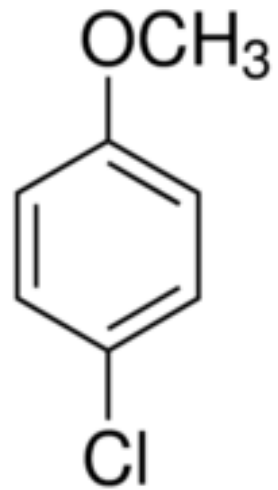
11. 4-Βρωμοφαινόλη



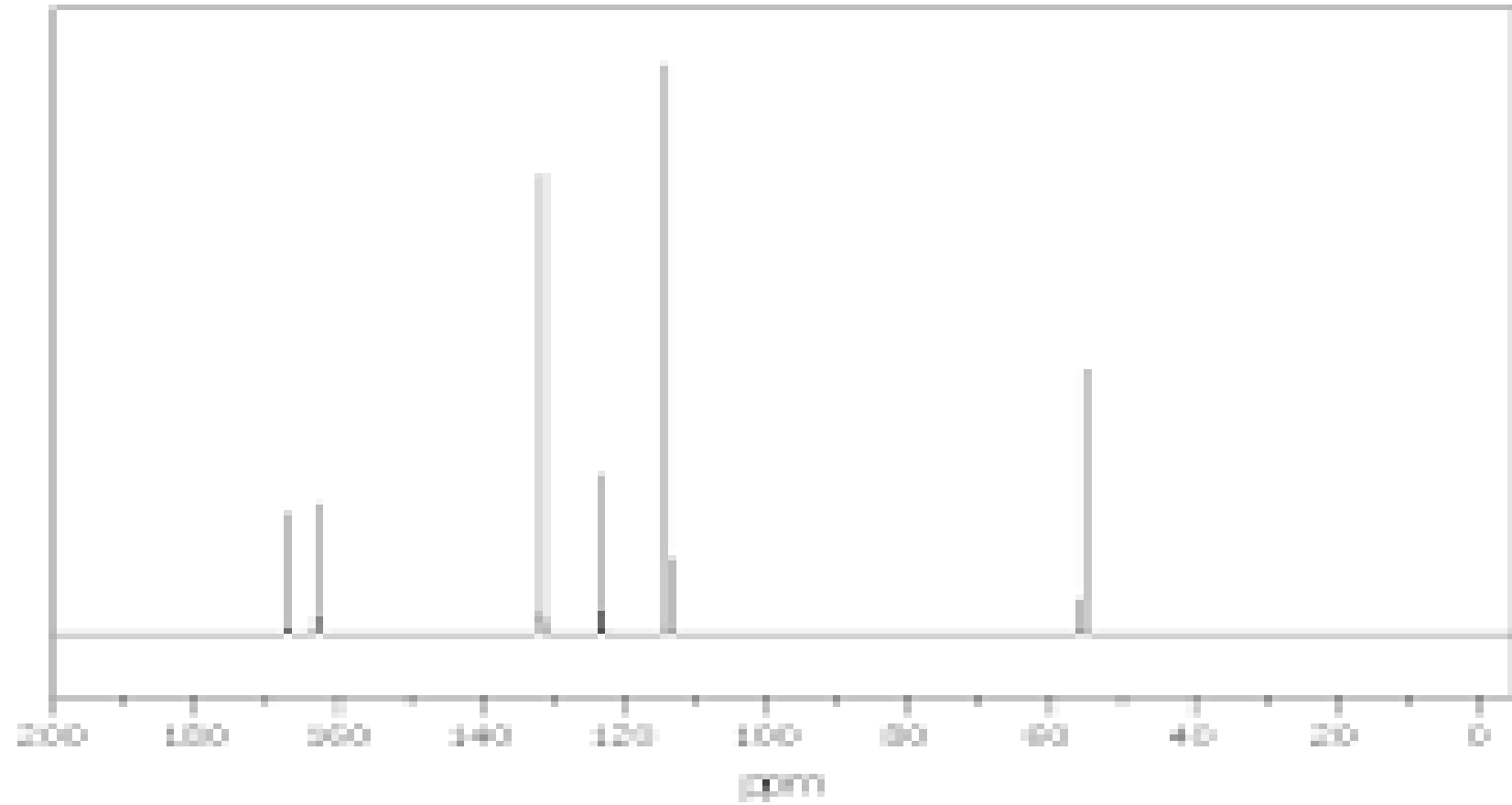
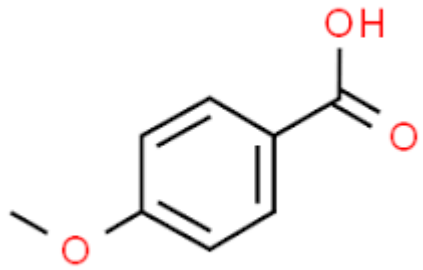
12. Αιθοξυβενζόλιο



13. 4-Χλωρομεθοξυβενζόλιο



14. 4-Μεθοξυβενζοϊκό οξύ



15. 1-(4'-Χλωροφαινυλο)βουτανόνη (4'-Χλωροβουτυροφαινόνη)

