

## APPLYING THE INQUA SCALE TO THE SOFADES 1954, CENTRAL GREECE, EARTHQUAKE

Papathanassiou G.<sup>1</sup>, Valkaniotis S.<sup>1,2</sup>, Pavlides S.<sup>1</sup>

<sup>1</sup> Aristotle University of Thessaloniki, Faculty of Sciences, Department of Geology, [gpapatha@geo.auth.gr](mailto:gpapatha@geo.auth.gr), [svalkan@geo.auth.gr](mailto:svalkan@geo.auth.gr), [pavlides@geo.auth.gr](mailto:pavlides@geo.auth.gr)

<sup>2</sup> National Observatory of Athens, Geodynamic Institute

### Abstract

Macroseismic intensity scales are used in order to measure the size of an earthquake using the impact of the ground shaking on humans, man made environment and nature. The INQUA scale is a new scale based solely on the earthquake-induced ground deformations, proposed by the INQUA Subcommission on Paleoseismicity. This scale is applied to the Sofades 1954 earthquake in order to test its accuracy and reliability. From the comparison among the evaluated intensities based on MM scale with the degrees of INQUA intensity at several locations, we conclude that, in case of earthquakes which triggered remarkable geological effects, these intensity values are about the same. Nonetheless, the use of INQUA scale is suggested in combination with the existing ones, as an assessing tool of the intensity based only on geological effects

**Key words:** Intensity, Earthquake, INQUA, Greece.

### Περίληψη

Οι μακροσκοπικές κλίμακες έντασης ενός σεισμού έχουν χρησιμοποιηθεί για την εκτίμηση του μεγέθους του, βασιζόμενες στην καταγραφή της επίδρασης την εδαφικής κίνησης στην συμπεριφορά του ανθρώπου και τις μεταβολές που προκαλούνται στο φυσικό και τεχνητό περιβάλλον. Η προτεινόμενη, από την επιτροπή της Παλαιοσεισμολογίας, κλίμακα INQUA λαμβάνει υπόψη της, κατά την εκτίμηση της σεισμικής έντασης, μονάχα τις εδαφικές παραμορφώσεις και μεταβολές τις οποίες προκάλεσε η σεισμική δόνηση. Για τον έλεγχο της ακρίβειας και της αξιοπιστίας της INQUA, αποφασίστηκε η εφαρμογή της κλίμακας στον σεισμό των Σοφάδων το 1954. Από τη σύγκριση των τιμών της έντασης INQUA με τις αντίστοιχες τιμές της κλίμακας MM, καταλήξαμε στο συμπέρασμα ότι στην περίπτωση σεισμών οι οποίοι προκαλούν έντονα δευτερογενή φαινόμενα, οι τιμές των εντάσεων είναι περίπου ίσες. Παρόλα αυτά, προτείνεται η χρησιμοποίηση της κλίμακας INQUA, σε συνδυασμό με τις υπάρχουσες, καθώς δίνει έμφαση στις γεωλογικές παραμορφώσεις, αποφεύγοντας να χρησιμοποιήσει δεδομένα τα οποία σχετίζονται με την μεταβαλλόμενη από θέση σε θέση τρωτότητα των κατασκευών.

**Λέξεις κλειδιά:** Ένταση, Σεισμός, INQUA κλίμακα, Ελλάδα

## 1. Introduction

Macroseismic intensity values have been used for the assessment of the seismic hazard of an area since they measure somehow the ground shaking by taking into consideration its impact on humans, structures and the environment. However, the last decade during this assessment there has

been an undervaluation of the role of earthquake-induced ground deformation. The new intensity scale, INQUA, is based only on the environmental effects that are triggered by an event.

In order to test its accuracy and reliability, the definitions of intensity degrees of this scale were applied to Sofades 1954 earthquake. Afterwards, the evaluated 'INQUA' intensities are compared with the MM degrees of the earthquake, as they were assessed by Papazachos and Papazachou (1989). Previous tests of the INQUA scale in Greece were performed by Papathanassiou & Pavlides (2006) and Fokaefs & Papadopoulos (2006) concerning the Lefkada 2003, Elia 1988 and Athens 1999 earthquakes respectively.

## **2. Leontari-Anavra Fault Zone and the 1954 earthquake**

### **2.1. Geologic setting**

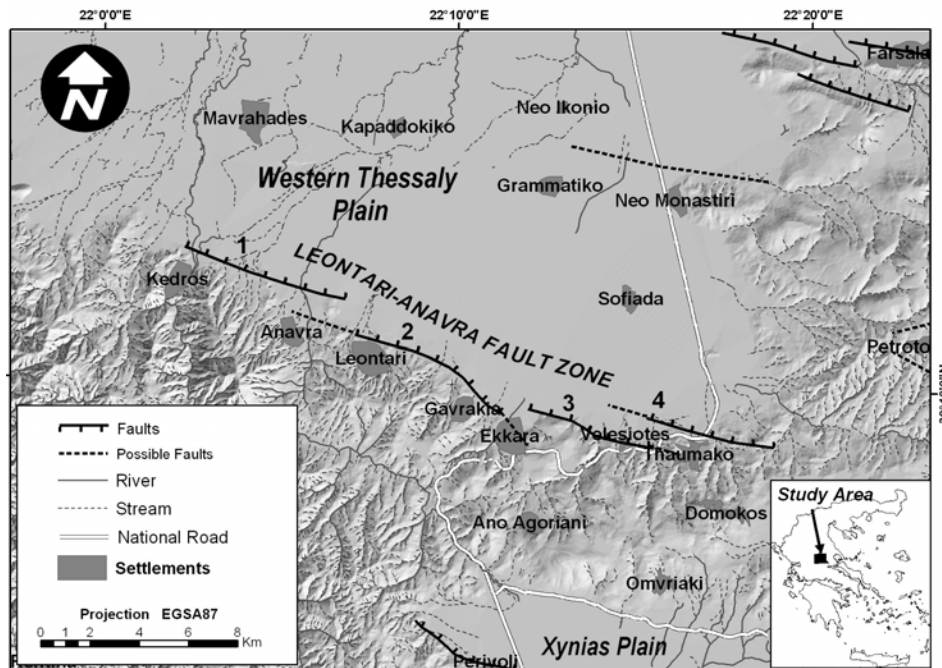
The studied area is situated on the southern part of the Western Thessaly plain, a Late Cainozoic extensional basin (Caputo 1990, Caputo & Pavlides 1993). Western Thessaly basin is filled with Late (?) Pliocene–Holocene fluvio-terrestrial deposits, with a thickness of more than 500m. The basement and surrounding hills consist of Alpine formations from Pelagonian, Pindos and Koziakas/Western Greece geotectonic units (Aubouin 1959, Kallergis 1970, Caputo 1990), mainly limestones, flysch and ophiolites. Molassic sediments of undetermined age (possibly Oligocene–Miocene) are found near Domokos and Anavra (Caputo 1990).

Western Thessaly basin was formed during the first extensional phase (Late Miocene–Pliocene), following or during post-orogenic collapse, trended NE-SW (Merciet et al. 1979, Caputo & Pavlides 1993). The second extension phase, trending N-S, started in Middle Pleistocene and activated E-W and ENE-WSW striking faults.

### **2.2. Leontari-Anavra Fault Zone**

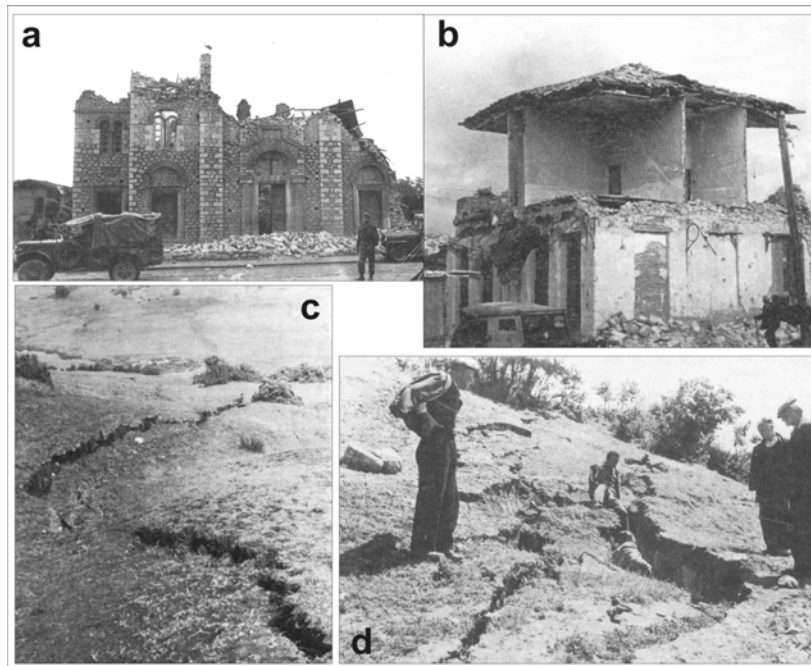
Among the Late Quaternary faults bounding the southern part of Western Thessaly Plain, Leontari-Anavra Fault Zone is the dominant active fault zone. Following the 1954 Sofades earthquake surface ruptures, detailed studies revealed information about this previously unknown fault zone (Papastamatiou & Mouyiaris 1986a, Caputo 1990, Papadopoulos 1992, Mountrakis et al. 1993, Goldsworthy & Jackson 2000, Valkaniotis 2005).

Leontari-Anavra Fault Zone consists of four linked segments (Kedros, Leontari, Velesiotes and Thaumako) dipping N, in an en echelon arrangement trending ENE-WSW (Figure 1). Separate segments have length of 5000 to 7000 m, with a total length of up to 25 km. Continuous activity along the fault zone and basin-ward migration in combination with overlapping segments has led to the creation of a multiple-scarp footwall morphology. Linkage of fault segments is shown by relay ramps and even transfer faults in segment boundaries, leading to overlapping or abandoned fault tips (Valkaniotis 2005).



**Figure 1. Active and possible active faults in southern part of Western Thessaly plain. Leontari-Anavra Fault Zone, ruptured during the 1954 earthquake, consists of four separate segments: Kedros (1), Leontari (2), Velesiotis (3) and Thaumako (4). Shaded relief and drainage network digitized from Hellenic Army Topographic Maps of 1:50.000 scale. Fault data from Valkaniotis (2005).**

Leontari-Anavra Fault Zone is responsible for the 30<sup>th</sup> April 1954 Sofades earthquake, having a magnitude of  $M_s = 6.8$  (Papastamatiou & Mouyiaris 1986a, Ambraseys & Jackson 1990, Caputo 1990, Ambraseys & Jackson 1998, Ambraseys 2001). The full length of the fault zone is believed to have been ruptured during the earthquake. Surface ruptures with a mean vertical displacement of about 1 m were documented along the fault zone, mainly for 2-3 km between Gavrakia and Ekkara (Kato Agoriani) villages (Papastamatiou & Mouyiaris 1986a). However, recent studies report more individual surface ruptures all along the 25 km fault zone (Ambraseys & Jackson 1990, Pavlides 1993, Valkaniotis 2005). The lack of major documented surface ruptures is believed to be a combination of un-sufficient post-earthquake surveys and the possibility of important post-earthquake slip along the fault. Reports for continuous repairs of broken railway lines near Velesiotis fault for more than a week after the earthquake support the latter scenario (Papastamatiou & Mouyiaris 1986a, Valkaniotis 2005).



**Figure 2. a,b) Structural damages at Sofades; c,d) surface faulting at the locations of Ekkara (Kato Agoriani) and Ano Agoriani, respectively (photos from Papastamatiou & Mouyiaris, 1986b)**

### **3. The Sophades 1954 earthquake**

On April 30th, 1954 an earthquake ( $M_s$  6.8) occurred in Thessaly, Central Greece. According to the Laboratory of Geophysics of the Dept. of Geology, Aristotle University of Thessaloniki its focus was located at  $39.3^\circ N$   $22.2^\circ E$ . The maximum intensity based on MM scale was evaluated as IX at the town of Sofades (Papazachos & Papazachou, 1989).

This event induced severe damages to the majority of the houses at the large population areas in central Greece. In particular, 32 and 18 per cent of the building stock, respectively, of the towns of Karditsa and Farsala was destroyed, while in Sofades more than 90 per cent of the houses were collapsed or heavily damaged (Ambraseys and Jackson, 1990). Earthquake environmental effects, such as surface faulting and liquefaction-induced ground deformation, were reported in detailed by Papastamatiou & Mouyiaris (1986a) and Ambraseys & Jackson (1990).

#### **3.1. Evaluation of the intensity degrees based on INQUA scale.**

In order to evaluate the macroseismic intensity, the descriptions of Papastamatiou & Mouyiaris (1986a; 1986b) and Ambraseys & Jackson (1990) were used, while the estimated degrees were assessed based on the definition of INQUA scale (Michetti et al., 2004). The full text of the INQUA intensity degrees can be found on the website [http://www.apat.gov.it/site/en-GB/Projects/INQUA\\_scale/](http://www.apat.gov.it/site/en-GB/Projects/INQUA_scale/)

The locations, where the macroseismic intensity was assessed based on INQUA scale, are classified in two categories, depending on the accuracy of the descriptions of the environmental effects. In the first category are classified the sites of Ekkara, Ano Agoriani, Karyes, Agria and Pshalitsa, while the sites of Vouza, Mikro Evidrio, Kipseli and Panagia were listed in the second one. The evaluated intensities for all the locations are listed in the following Table 1 while their distribution is shown in figure 3.

In particular, severe structural damages were observed and appearance of sand was reported in wells at 1-2 m depth at the coastal part of the village of Agria. This co seismic effect is characterized as modest to appreciable on the environment, according to the definition of INQUA scale "... rare occurrence of significant variations in water levels in wells and variations of chemical-physical properties of water in wells...". Thus, the intensity 'INQUA' degree was evaluated as VI-VII.

At the location of Ano Agoriani primary effects such as surface faulting of 20cm wide and 30 cm settlement were observed (Figure 2). These effects leaved significant and permanent traces in the environment, therefore the evaluated INQUA intensity degree is VIII-IX.

Surface faulting was mainly reported at the location of Ekkara (Figure 2), where the rupture extended for several kilometers, with offsets more than 70cm, causing damages to the railway line. According to the definition of INQUA scale, this effect is characterized as dominant, thus the evaluated intensity is IX-X, the maximum one for the 1954 earthquake based on INQUA scale.

Liquefaction phenomena were reported at the locations of Karyes, Vouza, Panagia, Mikro Evidrio and Pashalitsa. In particular at the village of Karyes, ejection of water in a high of 1-2 meters was reported, probably due to the liquefaction of the sublayers, thus according to INQUA scale the intensity value is VII. At the location of Mikro Evidrio, Papastamatiou & Mouyiaris (1986a) reported the ejection of water and sand mixture from ground cracks on the fields, consequently the value of intensity is estimated as VII based on INQUA scale. Similar phenomena, like appearance of water on the fields characterized as liquefaction-induced effects by Ambraseys & Jackson (1990), were reported at the location of Vouzia, assessing a value of VII for the INQUA intensity.

Moreover, at the location of Pashalitsa, a subsidence of 50cm was reported and ejection of water with sand was observed at the same area. Furthermore, ground crack of 50m length was observed inside the village. According to the definition of INQUA scale, these effects are characterized as considerable "... localized settlements (subsidence up to ca 30cm)...liquefaction may be frequent in the area...", thus the evaluated intensity is equal to VIII. At the village of Kipseli, Papastamatiou & Mouyiaris (1986b) reported the appearance of rupture with small wide (10cm), while Ambraseys and Jackson (1990) mentioned this site as a liquefaction occurrence area. Therefore, the INQUA intensity is assessed as VII. At the site of Panagia, taking into account the activation of a small spring (Papastamatiou & Mouyiaris, 1986b), the evaluated INQUA intensity is equal to VII.

Additionally, empirical relations between epicentral intensity ( $I_0$ ) and surface faulting parameters were used for evaluating the degree of  $I_0$ . According to Michetti et al. (2004) the length of the surface rupture (SRL) and the maximum displacement (MD) are correlated to the epicentral intensity with the following equations:

$$I_0 = 0.5503 \times \ln(SRL) + 7.861 \quad (1)$$

$$I_0 = 0.5786 \times \ln(MD) + 9.51 \quad (2)$$

In our case, the SRL (km) of the causative fault was 25 km (Ambraseys & Jakson, 1998; Valkaniotis, 2005), thus using equation [1] the estimated value of epicentral intensity is  $I_0=9.6$ . The same value is approximately computing based on equation [2], taking into account that the maximum displacement of the 1954 earthquake was 1m (Papastamatiou & Mouyiaris 1986a). The computed degrees of epicentral intensity by equations [1] and [2] are in agreement with the one ( $I_0=IX-X$ ) that was evaluated based on the reported earthquake-induce environmental effects of the 1954 shock, using the definitions of INQUA scale.

**Table 1 – Evaluated intensity degrees based on INQUA scale**

Site	Latitude	Longitude	Intensity (MM scale), by Papazachos & Papazachou, 1989	Intensity (INQUA scale)
Agria	39.344	23.011		VI-VII
Ano Agoriani	39.118	22.214	IX-X	VIII-IX
Ekkara	39.148	22.185	IX-X	IX-X
Karyes	39.084	22.417		VII
Kipseli	39.368	22.139	VIII-IX	VII
Mikro Evidrio	39.378	22.406		VII
Panagia	39.097	22.211		VII
Pshalitsa	39.356	22.193	IX-X	VIII
Vesiototes	39.150	22.249		VII-VIII
Vouza	39.157	22.362		VII

The macroseismic intensities for these sites based on MM scale were evaluated as: Sofades, Pshalitsa (IX-X), Kipseli (VIII-IX), Ekkara, Ano Agoriani (IX-X) according to Papazachos & Papazachou (1989). From the comparison among the MM scale values with those based on INQUA scale, it seems that the degrees of intensity are about the same at the locations where severe environmental effects were triggered by the event. However, the maximum intensity based on MM scale was located, except from the site of Ekkara, at a site called Sofades (figure 2) where, as it is mentioned above, 90 per cent of the building stock was destroyed; although no remarkable secondary effects were reported.

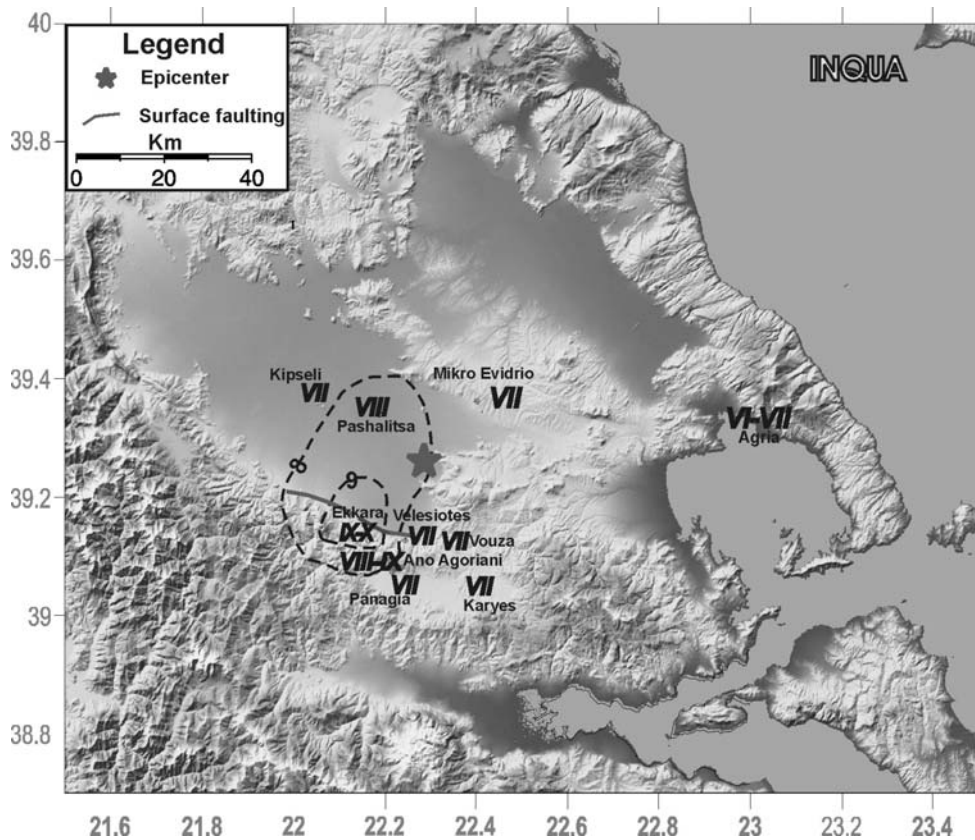


Figure 3. Distribution of the intensity based on INQUA scale

#### 4. Conclusions

The Sofades 1954 earthquake ( $M_s$  6.8) induced severe structural damages and remarkable environmental effects in an extended area of Central Greece. In order to evaluate the macroseismic intensities, a new scale, INQUA, was applied. The maximum intensity, based on IQNUA scale, was evaluated as IX-X at the site of Ekkara, where surface faulting was reported. At the other locations, the degrees of intensities range from VI to VIII. From the comparison of the “INQUA” values of intensities with the “MM” ones, as they were assessed by Papazachos & Papazachou (1989), is concluding that at sites where the event induced severe secondary effects the evaluated intensities are about the same. However, at the site of Sofades the degree of intensity based on MM scale was evaluated as IX-X due to structural damages, although no ground deformations were reported.

Therefore, we conclude that, in case of earthquakes-induced ground deformations the application of the new macroseismic intensity scale (INQUA) results to the same degrees of intensity as the MM scale. Nonetheless, the use of this new scale is proposed, in combination with the existing scales, since it emphasizes the role of geological effects avoiding taking into account building’s performance which differs from site to site.

Moreover, the epicentral intensity ( $I_0$ ) was estimated using empirical relationships which correlate the degree of  $I_0$  with the surface faulting parameters. The computed intensity degree is in agreement with the value that was assessed using the reported ground deformations.

#### 5. References

Ambraseys, N.N., 2001. Reassessment of earthquakes, 1900–1999, in the Eastern Mediterranean and the Middle East. *Geophys. J. Int.*, 145, 471-485.

- Ambraseys, N.N., Jackson, J.A., 1990. Seismicity and associated strain of central Greece between 1890 and 1988. *Geophys. J. Int.*, *101*, 663-708.
- Ambraseys, N.N., Jackson, J.A., 1998. Faulting associated with historical and recent earthquakes in the Eastern Mediterranean region. *Geophys. J. Int.*, *133*, 390-406.
- Aubouin, J., 1959. Contribution a l'étude géologique de la Grèce septentrionale: les confins de l'Épire et de la Thessalie. *Ann. Geol. Pays Helleniques*, *10*, 1-525.
- Caputo, R., 1990. *Geological and structural study of the recent and active brittle deformation of the Neogene – Quaternary basins of Thessaly (Central Greece)*. PhD Thesis, Aristotle University of Thessaloniki.
- Caputo, R., Pavlides, S., 1993. Late Cainozoic geodynamic evolution of Thessaly and surroundings (central – northern Greece). *Tectonophysics*, *223*, 339-362.
- Foakefs, An., Papadopoulos, G., 2006. Testing the new INQUA intensity scale in Greek earthquakes, *Quaternary International*, accepted
- Goldsworthy, M., Jackson, J., 2000. Active normal fault evolution in Greece revealed by geomorphology and drainage patterns. *Geological Society Journal*, *157*, 967– 981.
- Kallergis, G., 1970. *Hydrogeologic Investigation of Kalambaka Sub-basin (W.Thessaly)*. Geol. Geophys. Studies, IGEGY, XIV/1, 197p.
- Mercier, J.L., Delibasis, N., Gautier, A., Jarrige, J.J., Lemeille, F., Phillip, H., Sebrier, M. and Sorrel, D., 1979. La néotectonique de l'Arc Egeen. *Rev. Geol. Dyn. Geogr. Phys.*, *21*, 67-92.
- Michetti, A.M., Esposito, E., Gurpinar, A., Mohammadioun, B., Porfido, S., Rogozhin, E., Serva, L., Tatevossian, R., Vittori, E., Audemard, F., Comerci, V., Marco, S., McCalpin, J., Morner, N.A., 2004. The INQUA scale. An innovative approach for assessing earthquake intensities based on seismically induced ground effects in natural environment. *Memorie descrittive della carta geologica d'Italia*, LXVII, 118p.
- Mountrakis, D., Kiliass, A., Pavlides, S., Zouros, N., Spyropoulos, N., Tranos, M. and Soulakellis, N., 1993. Field study of the Southern Thessaly highly active fault zone. *Proc. 2nd Congr. Hell. Geoph. Union, Florina, May 1993, Greece. Vol. 2*, 603-614.
- Papadopoulos, G.A., 1992. Rupture zones of strong earthquakes in the Thessalia region, Central Greece. *Proc. XXIII General Assembly Europ. Seismol. Commis. Prague, September 1992, vol. 2*, 337–340.
- Papathanassiou, G., Pavlides S., 2006. Using the INQUA scale for the assessment of intensity: Case study of the 2003 Lefkada (Ionian Islands), Greece earthquake, *Quaternary International*, accepted
- Papastamatiou, D., Mouyaris, N., 1986. The earthquake of April 30, 1954, in Sophades (Central Greece). *Geophys. J.R. Astron. Soc.*, *87*, 885-895.
- Papastamatiou, D., Mouyaris, N., 1986b. The Sophades earthquake occurred on April 30<sup>th</sup> 1954 – Field observations by Yannis Papastamatiou, *Geol. and Geoph. Res.*, IGME, Athens, 341-362
- Papazachos, B.C., Papazachou, K., 1989. The earthquakes of Greece, Ziti Publ., Thessaloniki, 365 pp.
- Pavlides, S., 1993. Active faulting in multi-fractured seismogenic areas: examples from Greece. *Z. Geomorph. N.F.*, *94*, 57-72.
- Valkaniotis, S., 2005. Study of Western Thessaly Active Faults. *Unpublished Msc thesis, Aristotle University of Thessaloniki*, 145pp.