

**ROCK ART SITES OF TALAMPAYA NATIONAL PARK**

Engineering geological conditions and problem:

The conservation of the rock art sites “Los Pizarrones”, “Puerta de Talampaya” and “El Bosquecillo”, in the Talampaya National Park, maintains the integrity of the unique and not-renewable values which are part of the World Heritage Site. The initial diagnosis of its conservation state showed serious signs of deterioration of the support, panels and rock motifs, plus a high risk of vulnerability due to the effects of many factors such as wind and flooding of the Talampaya river.

For example, Los Pizarrones archaeological site is located on the walls of the Talampaya river valley. This valley, eroded on red sandstone of the homonymous geological formation, is about 100m wide, making the river run in a sinuous way. The site is exposed in the outside of one of the curves, in the main sandy bed. Because of its location, during ordinary and exceptional flooding, the river affects the wall in a differential way. Moreover, the wall shows strong evidence of abrasion because of the action of the wind and the consequent particle transport. Finally, physic-chemical processes in the rock affect the outer layer of the wall – which supports the engravings- contributing to their falling in many sectors.



**Los Pizarrones**



**Los Pizarrones**



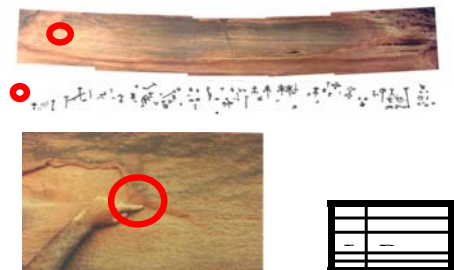
**El Bosquecillo**



**Puerta de Talampaya**

Protection measures already have been taken or have to be taken:

A national interdisciplinary team made a new preliminary evaluation in the field and a monitoring program was outlined for the archaeological sites and its environment in order to evaluate its evolution and behavior before enunciating the intervention tasks to take.



**Monitoring Form**

References on studies already performed:

Ferraro L.; Paradela H.; Caselli A.; Gonaldi M. E.; Ruiz L.; Monguillot J.; Pagni T.; Rodríguez C.; Romero Dindorf J. Y S. Arias INFORME DE COMISION P. N. TALAMPAYA – RECURSO CULTURAL LOS PIZARRONES, 14 Y 15 DE OCTUBRE DE 2002. M.S.