

**Tracking possible ways of transmission
of the highly pathogenic avian influenza virus H5N1
to Greece using ringing recoveries of wild birds**

Panagiotis GOULIAMTZIS and Vassilis GOUTNER*

Department of Zoology, School of Biology, Aristotle University of Thessaloniki, 54124 Thessaloniki, Greece

Supplementary material

* Corresponding author: tel.: +30 2310 998341, fax: +30 2310 998269, e-mail: vgoutner@bio.auth.gr

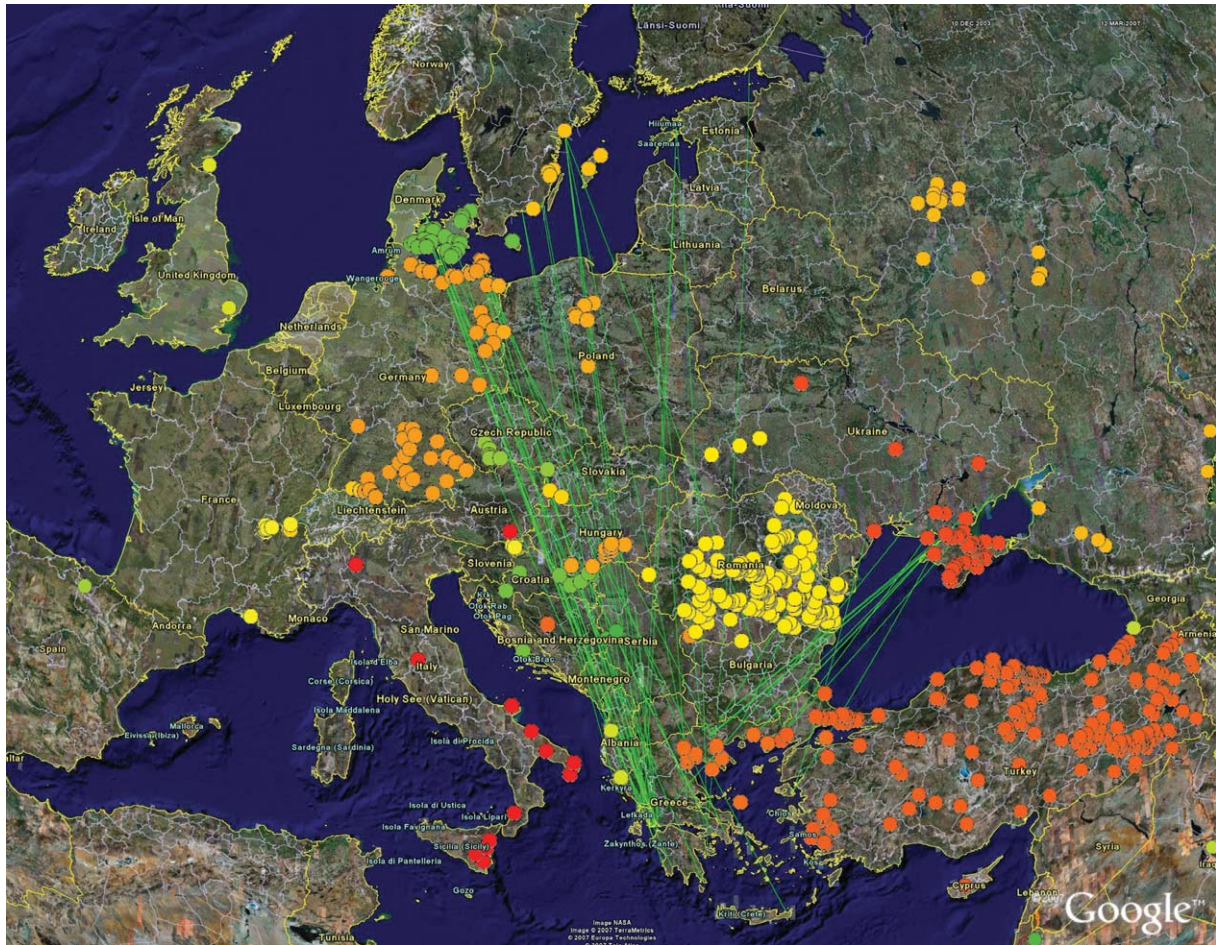


FIG. S1. Origin of great cormorants recovered in Greece (green lines) on Google Earth map. Dots indicate the H5N1 outbreak areas with a different colour in each country.

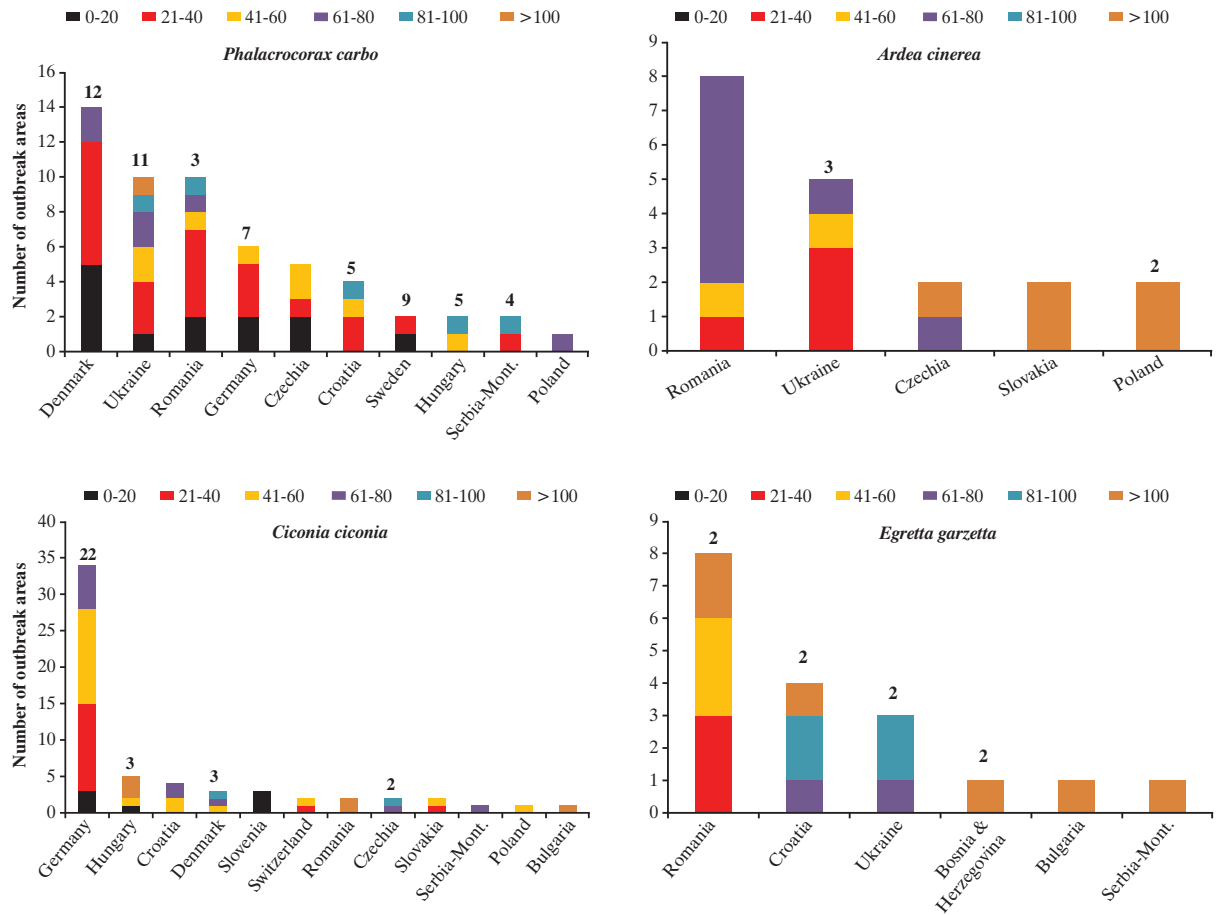


FIG. S2. Distance ranges (in km, indicated with different colours) of outbreaks from ringing sites of great cormorant, grey heron, white stork and little egret in different countries. Numbers above columns (shown where $n > 1$) denote the number of birds ringed in each country.

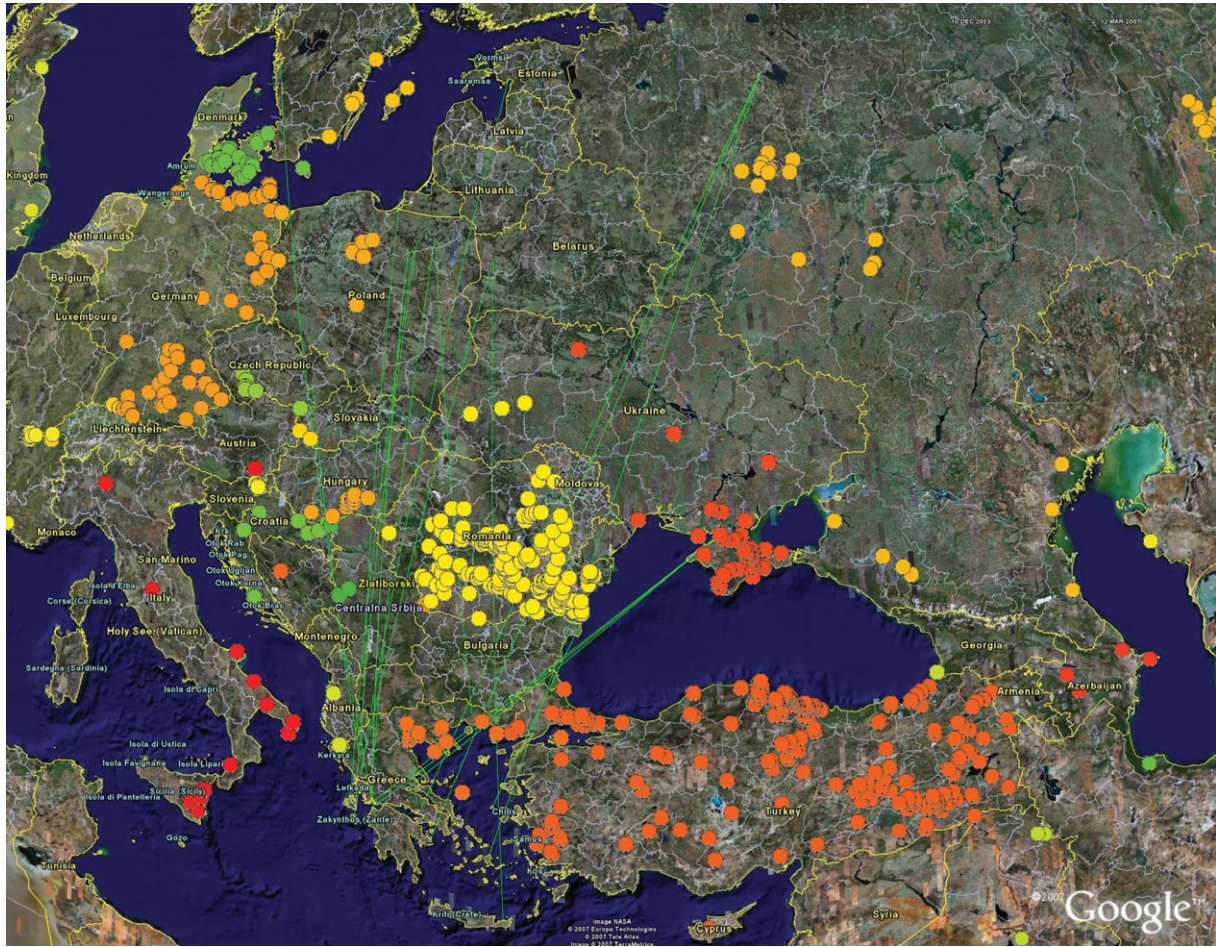


FIG. S3. Origin of grey herons recovered in Greece (green lines) on Google Earth map. Dots indicate the H5N1 outbreak areas with a different colour in each country.

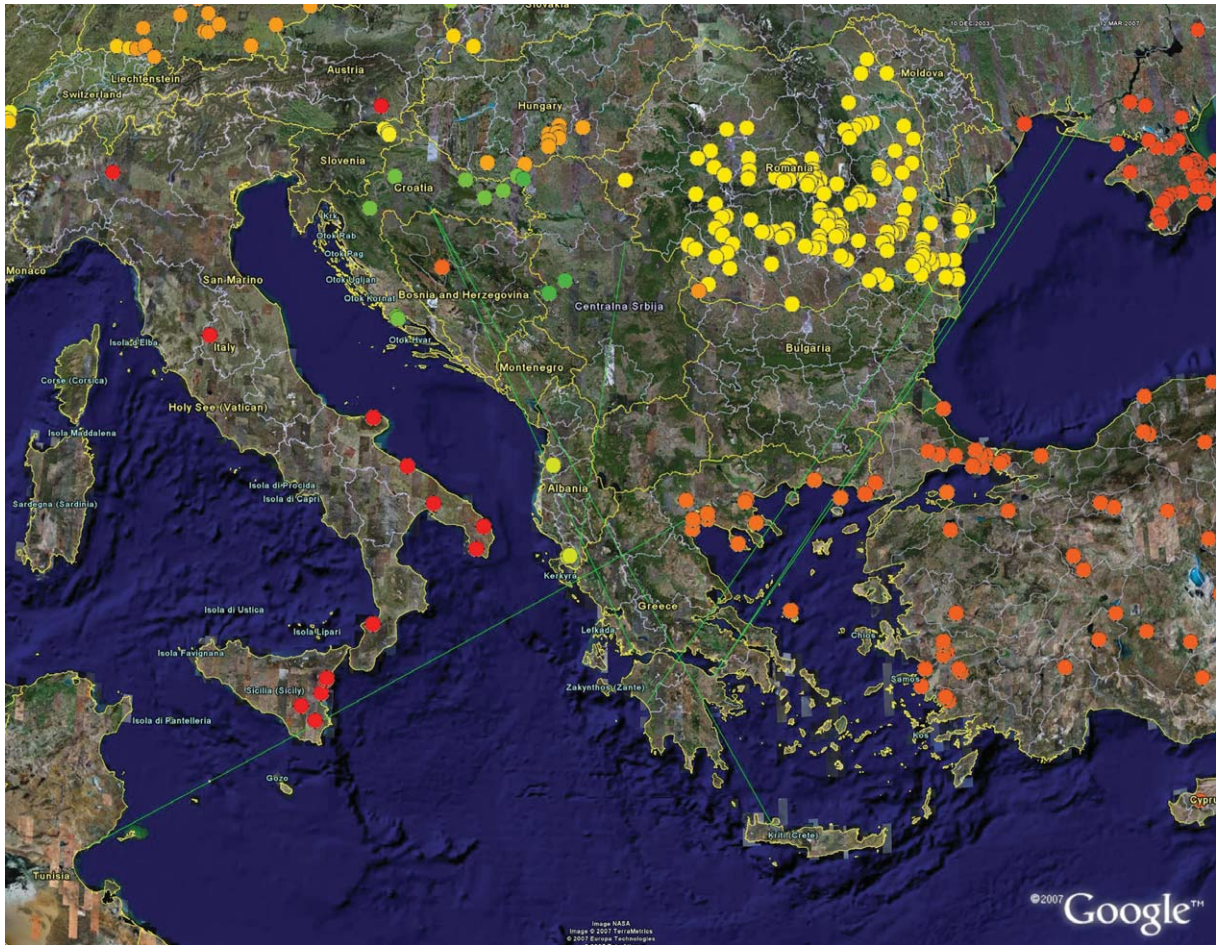


FIG. S4. Origin of little egrets recovered in Greece (green lines) on Google Earth map. Dots indicate the H5N1 outbreak areas with a different colour in each country.

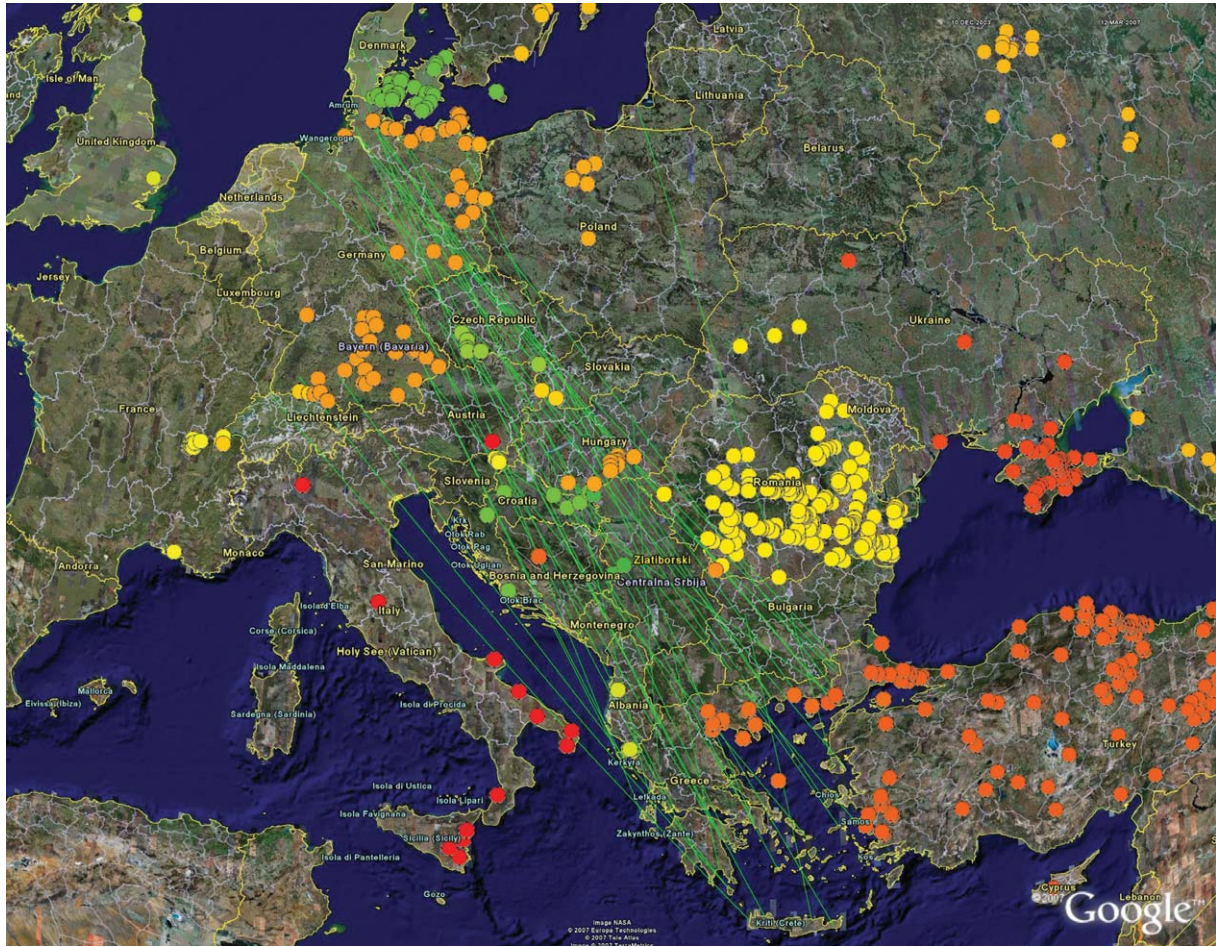


FIG. S5. Origin of white storks recovered in Greece (green lines) on Google Earth map. Dots indicate the H5N1 outbreak areas with a different colour in each country.

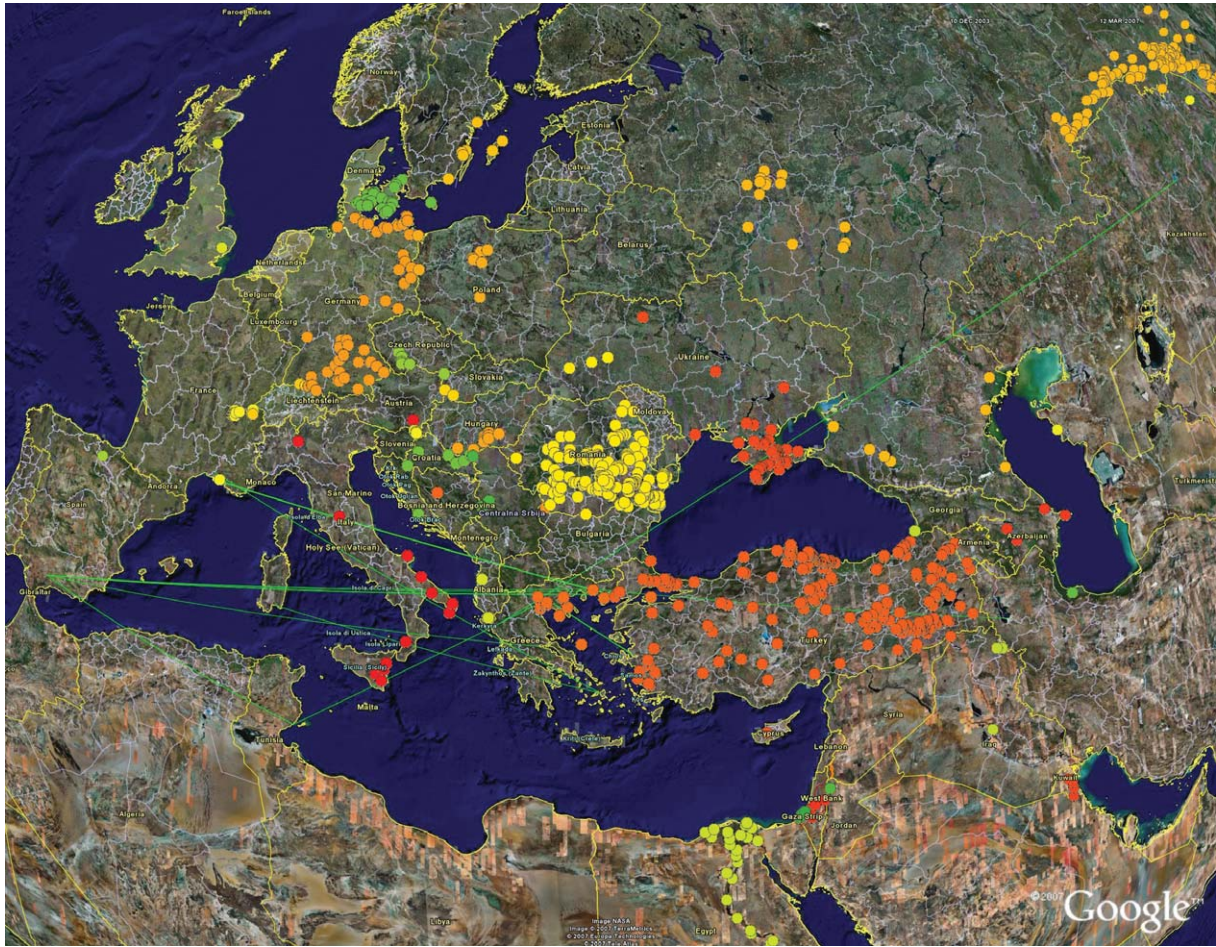


FIG. S6. Origin of greater flamingos recovered in Greece (green lines) on Google Earth map. Dots indicate the H5N1 outbreak areas with a different colour in each country.

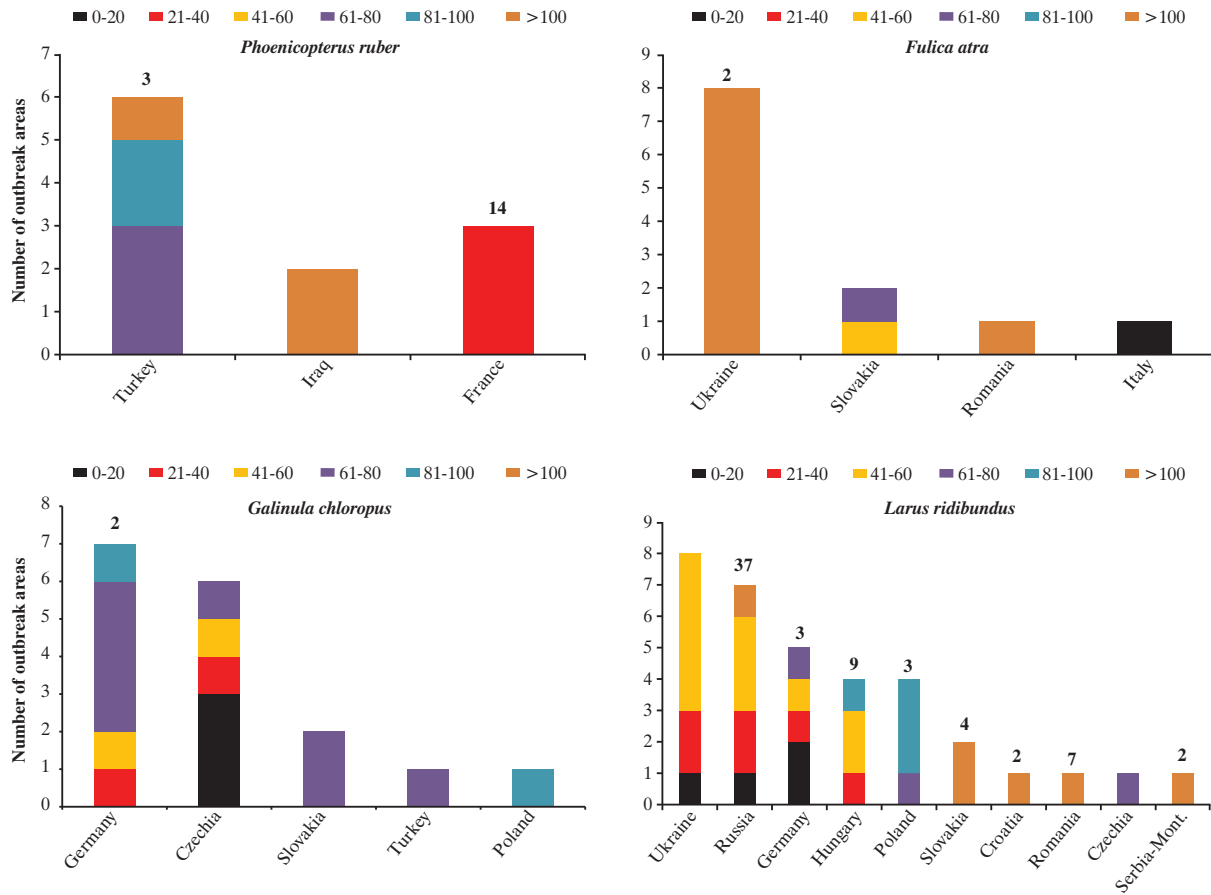


FIG. S7. Distance ranges (in km, indicated with different colours) of outbreaks from ringing sites of greater flamingo, common coot, common moorhen and black-headed gull in different countries. Numbers above columns (shown where $n > 1$) denote the number of birds ringed in each country.

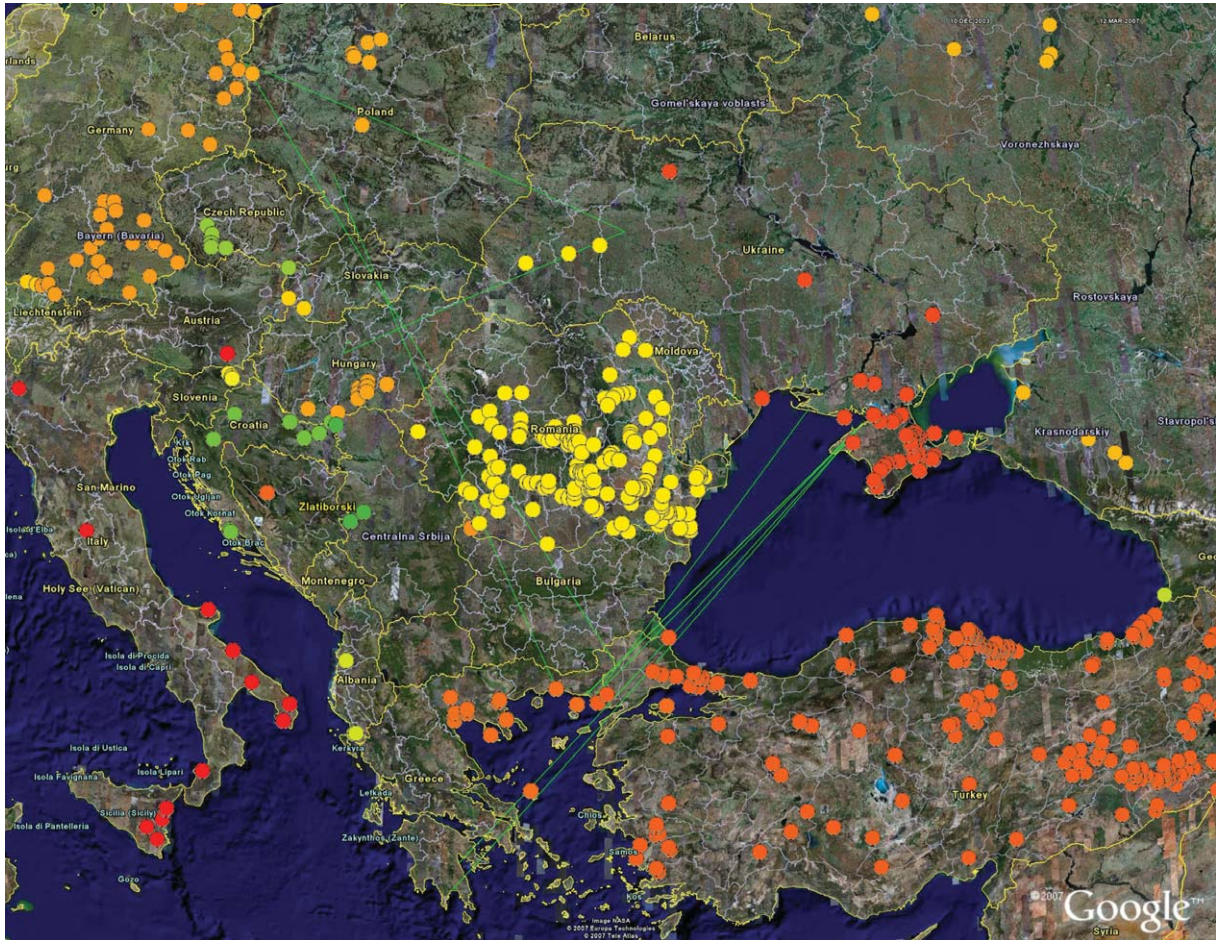


FIG. S8. Origin of mute swans recovered in Greece (green lines) on Google Earth map. Dots indicate the H5N1 outbreak areas with a different colour in each country.

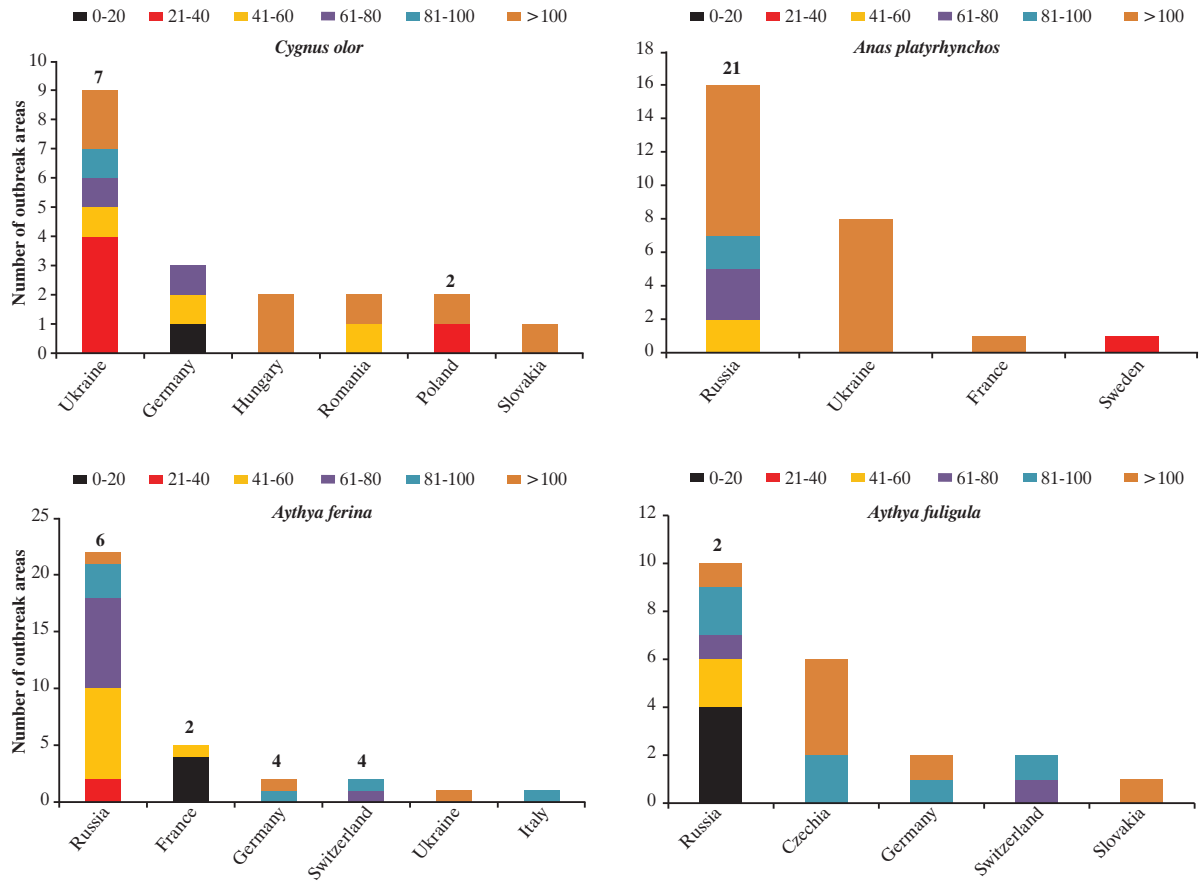


FIG. S9. Distance ranges (in km, indicated with different colours) of outbreaks from ringing sites of mute swan, mallard, common pochard and tufted duck in different countries. Numbers above columns (shown where $n > 1$) denote the number of birds ringed in each country.

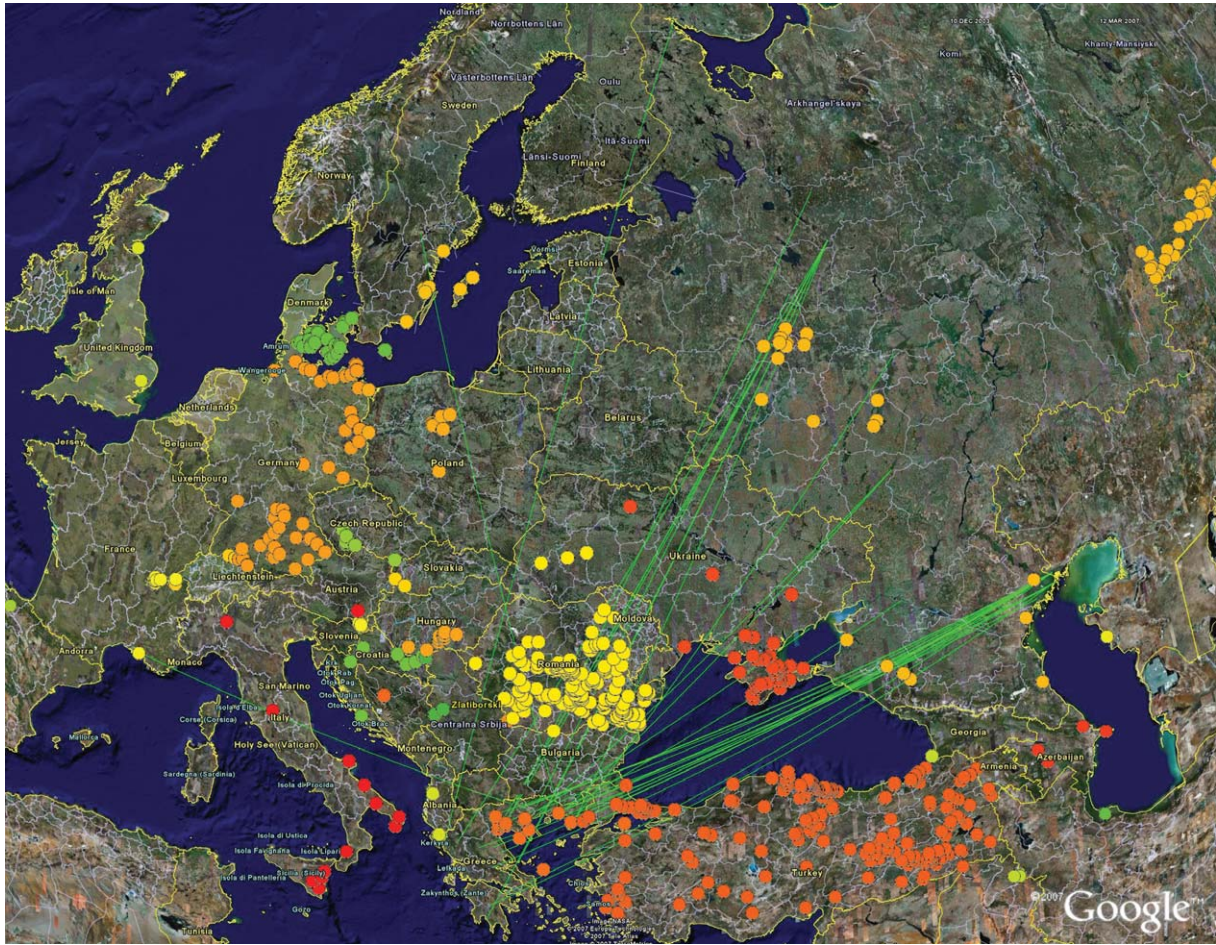


FIG. S10. Origin of mallards recovered in Greece (green lines) on Google Earth map. Dots indicate the H5N1 outbreak areas with a different colour in each country.

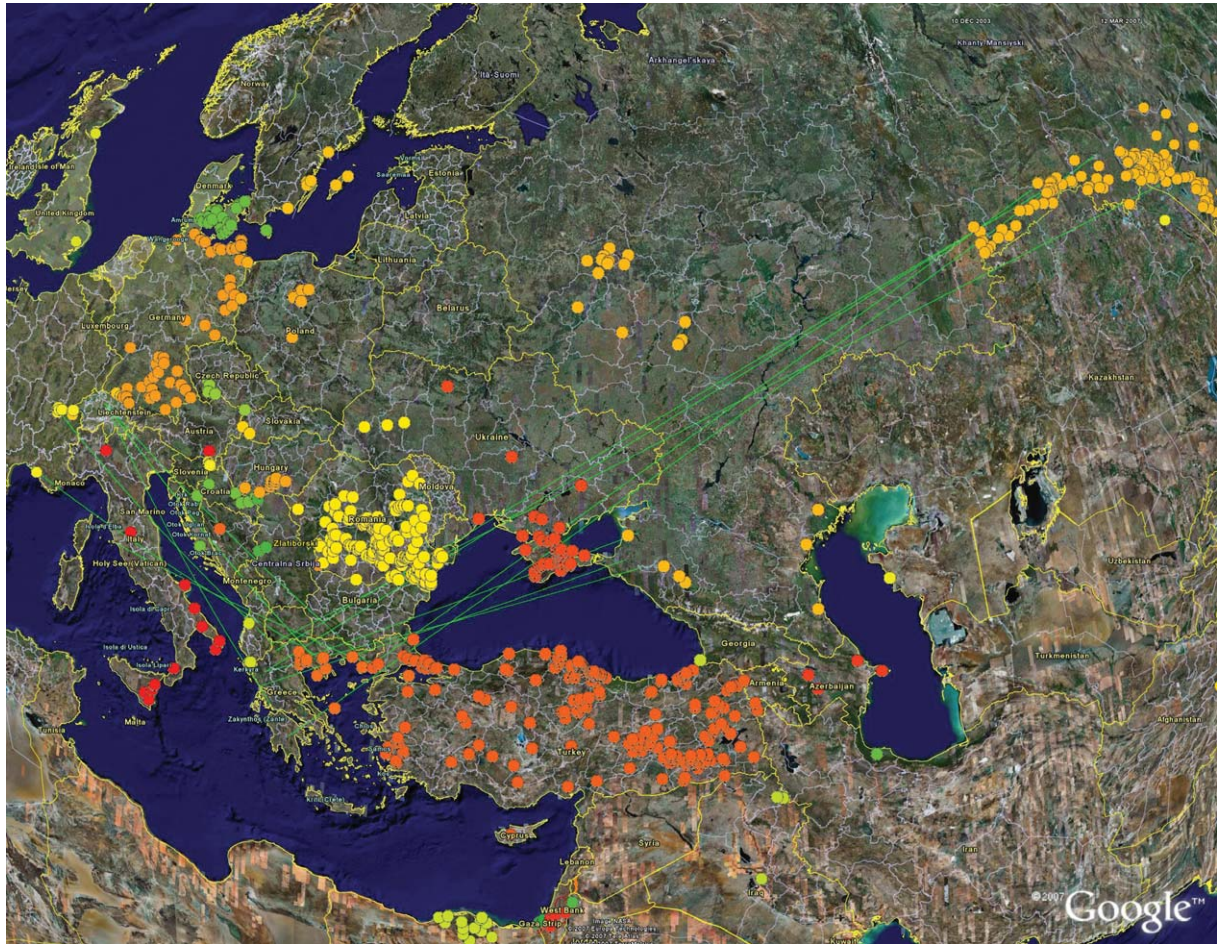


FIG. S11. Origin of common pochards recovered in Greece (green lines) on Google Earth map. Dots indicate the H5N1 outbreak areas with a different colour in each country.

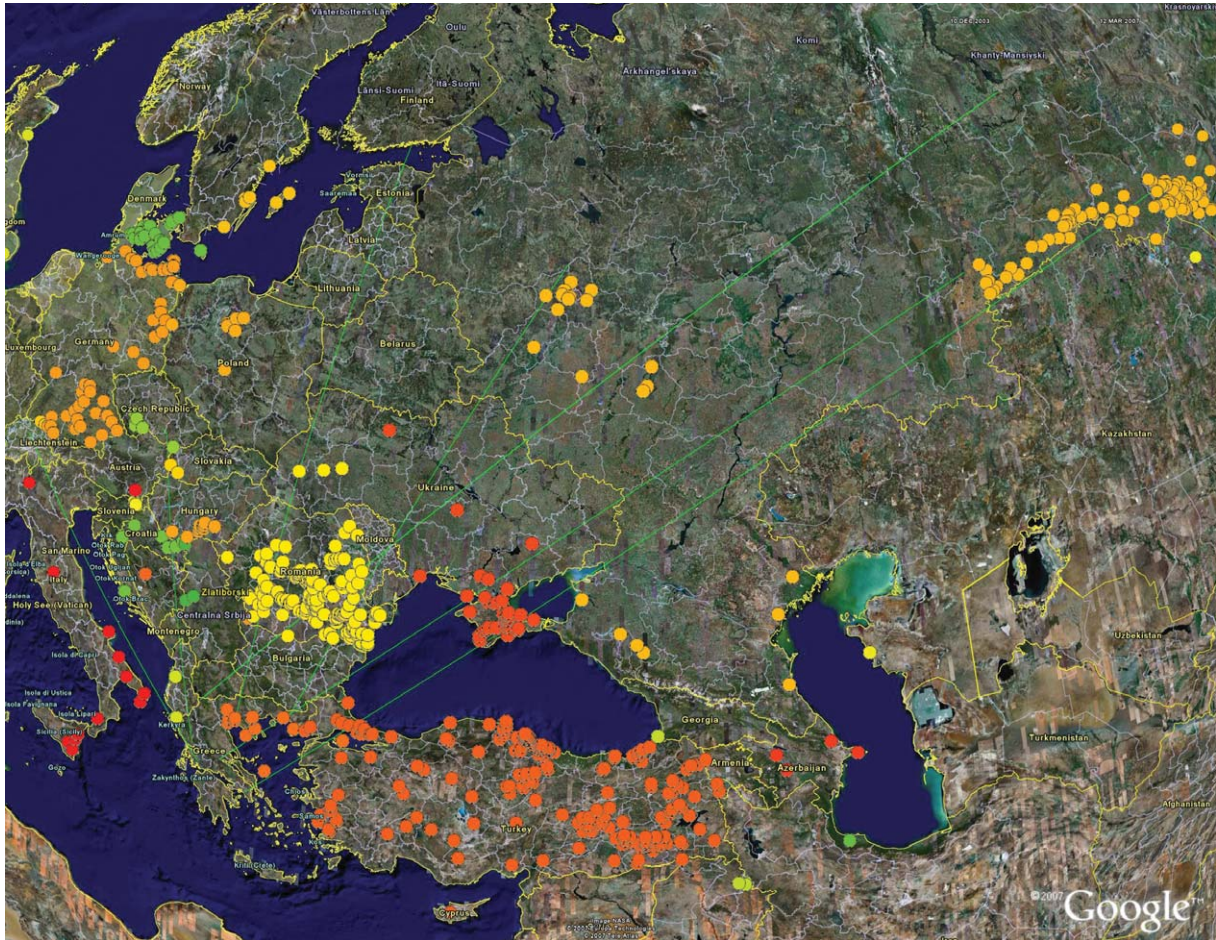


FIG. S12. Origin of tufted ducks recovered in Greece (green lines) on Google Earth map. Dots indicate the H5N1 outbreak areas with a different colour in each country.

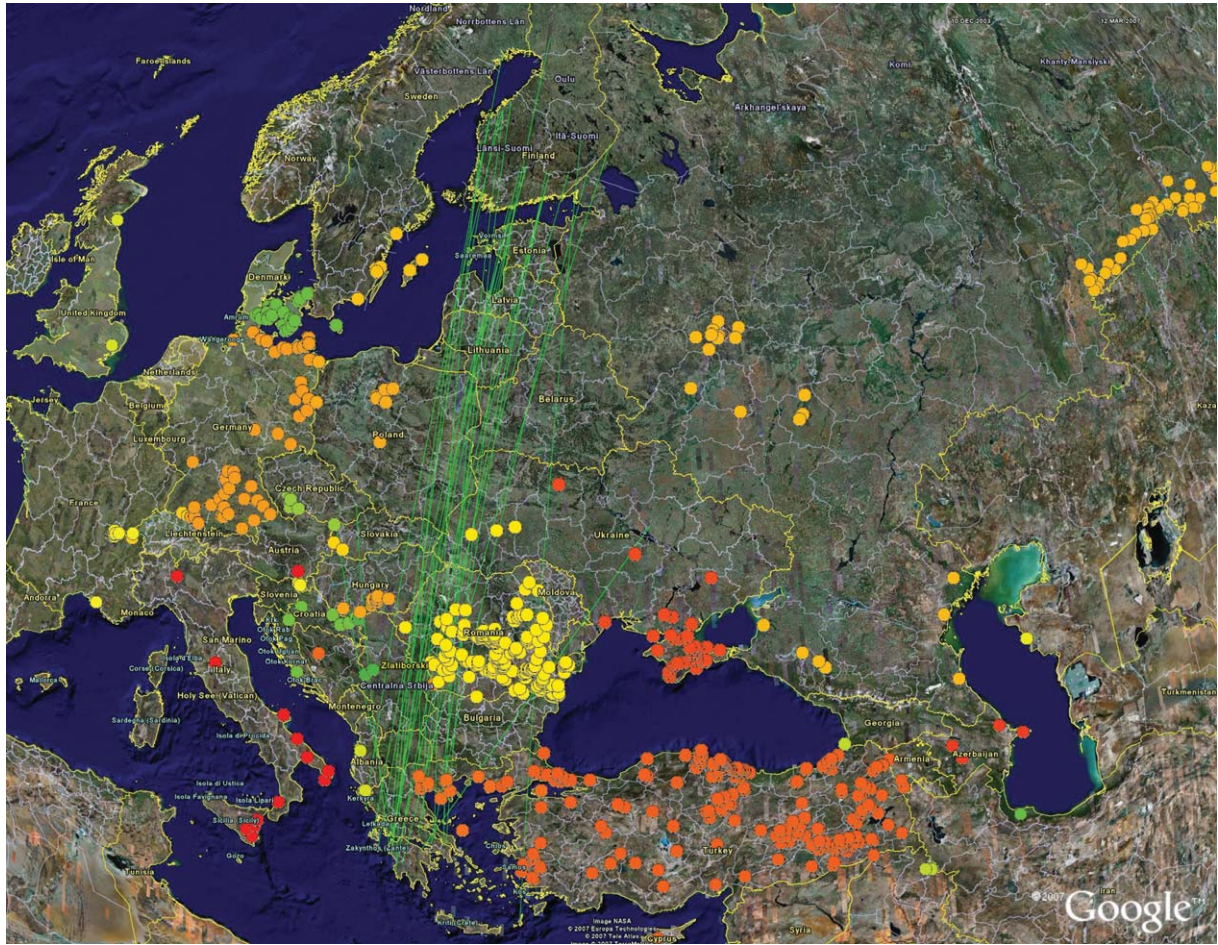


FIG. S13. Origin of common buzzards recovered in Greece (green lines) on Google Earth map. Dots indicate the H5N1 outbreak areas with a different colour in each country.

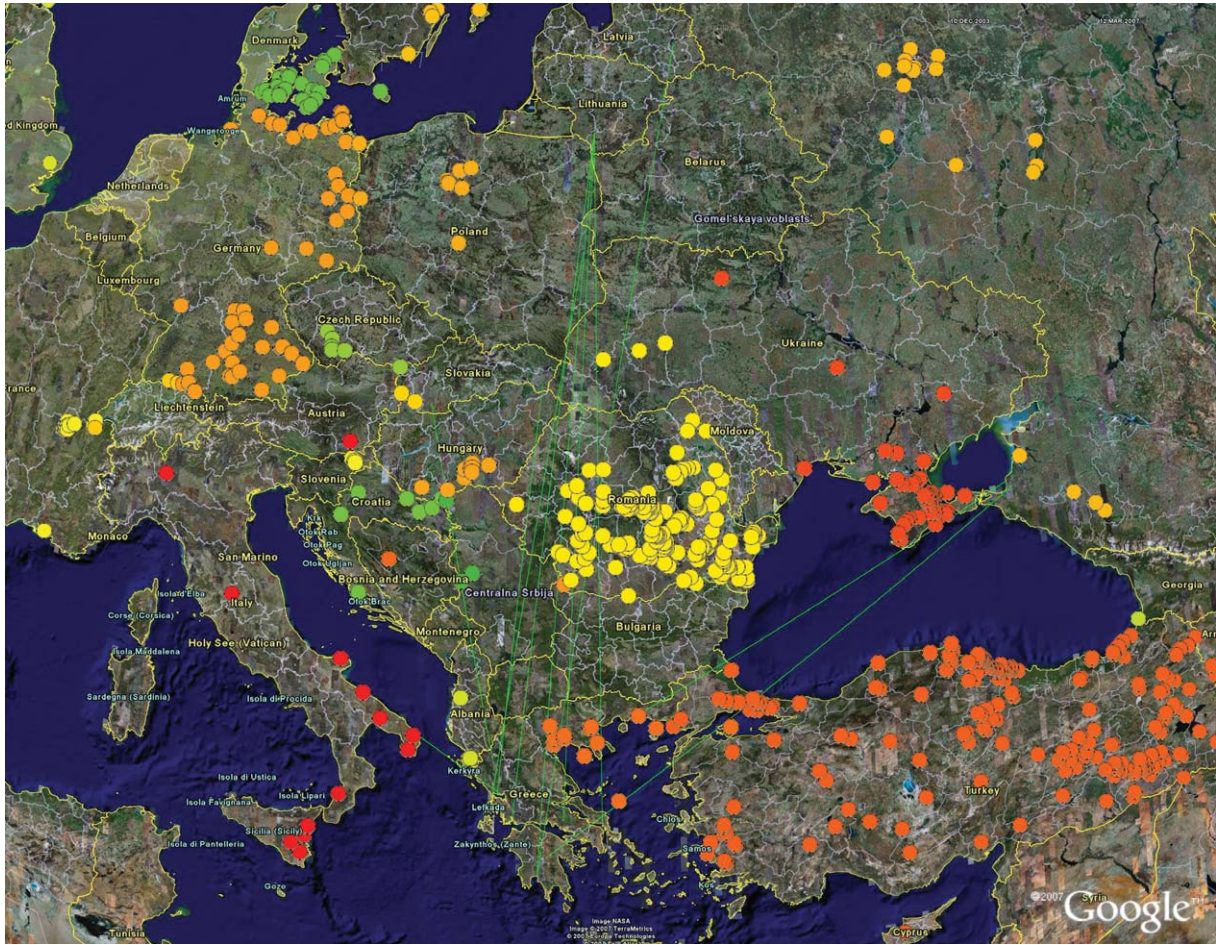


FIG. S14. Origin of common coots recovered in Greece (green lines) on Google Earth map. Dots indicate the H5N1 outbreak areas with a different colour in each country.

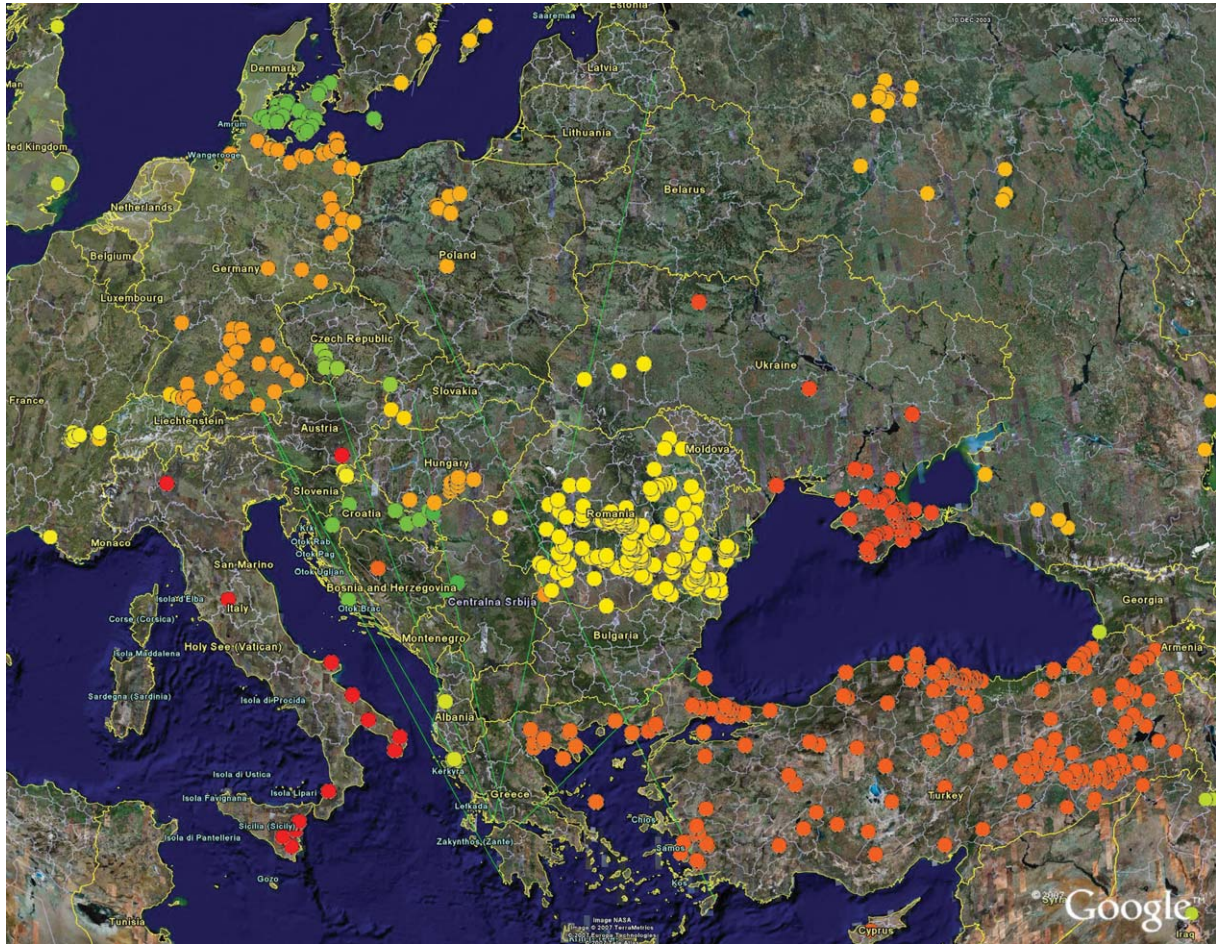


FIG. S15. Origin of common moorhens recovered in Greece (green lines) on Google Earth map. Dots indicate the H5N1 outbreak areas with a different colour in each country.

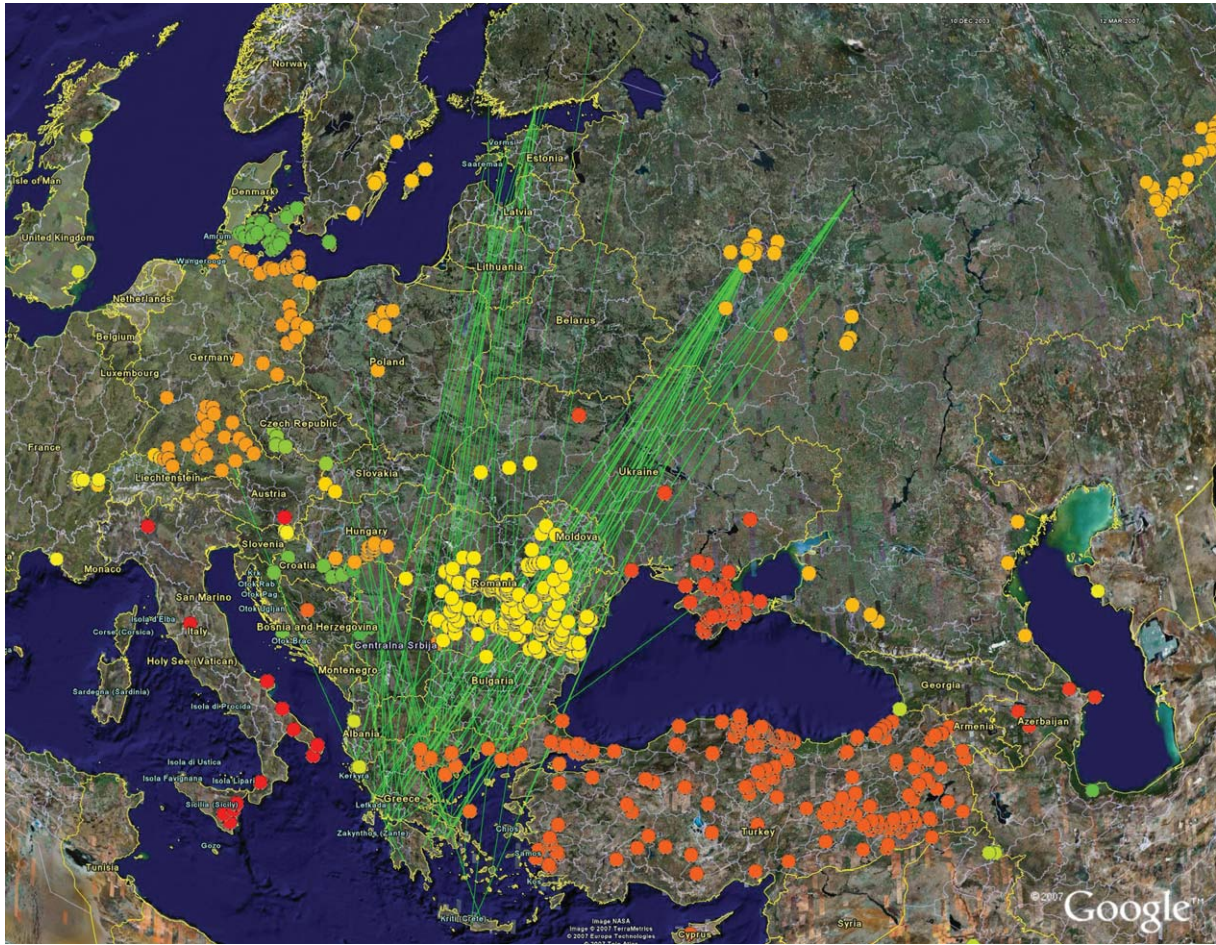


FIG. S16. Origin of black-headed gulls recovered in Greece (green lines) on Google Earth map. Dots indicate the H5N1 outbreak areas with a different colour in each country.

